

LOC/DME I-GYY 108.75 Chan 24 (Y)	APP CRS 306°	Rwy Idg TDZE 591 Apt Elev 597
---	------------------------	---

ILS or LOC RWY 30

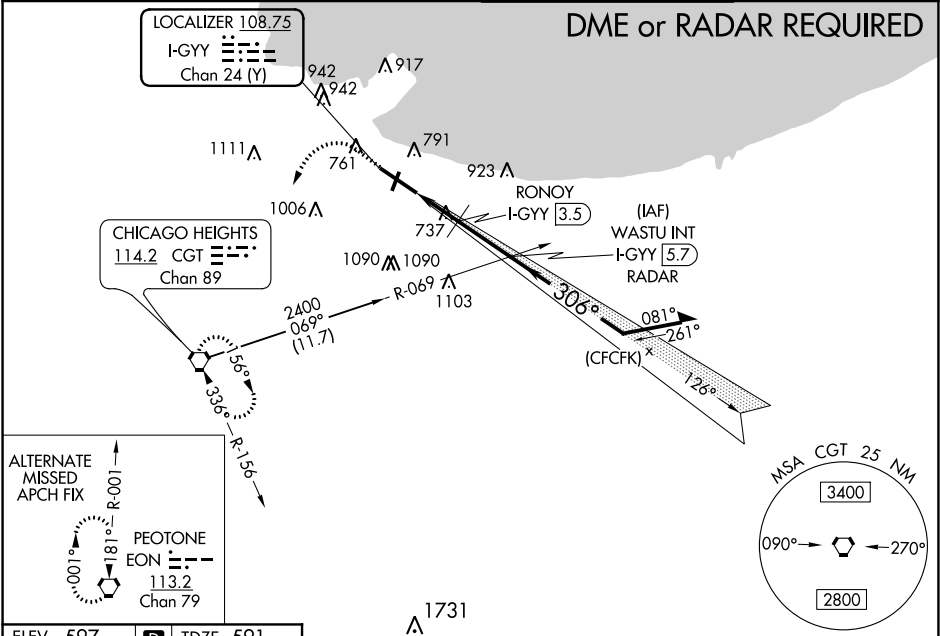
GARY/CHICAGO INTL (GYY)

⚠ When local altimeter setting not received, use Chicago Midway Intl altimeter setting and increase all DA 46 feet and all MDA 60 feet, increase S-LOC 30 Cat C/D visibility to 1½ miles, increase Circling Cat C/D and RONOY fix minimums Circling Cat C/D visibility ¼ mile. VDP NA with Chicago Midway Intl altimeter setting. **RVR 1800 authorized with use of FD or AP or HUD to DA, NA when using Chicago Midway Intl.

MALSR
A6

MISSED APPROACH: Climb to 1500 then climbing left turn to 2400 direct CGT VORTAC and hold.

ATIS 134.575	CHICAGO APP CON 133.1 285.6	GARY TOWER ★ 125.6 (CTAF) 0	GND CON 121.9
------------------------	---------------------------------------	---------------------------------------	-------------------------



ELEV 597

D

TDZE 591

640

627

8859 X 130

02

306° 4.3 NM from FAF

3604 X 100

672

2

TWR 662

130

REIL Rwys 2, 12 and 20

HIRL Rwy 12-30

MIRL Rwy 2-20

FAF to MAP 4.3 NM

Knots	60	90	120	150	180
Min:Sec	4:18	2:52	2:09	1:43	1:26

1500

2400

CGT

Increase to 1300 when using Chicago Midway Intl altimeter setting.

* LOC only.

WASTU INT I-GYY 5.7 RADAR

RONOY I-GYY 3.5

I-GYY 1.5

I-GYY 2.6

*1240#

2000

126°

306°

2400

Remain within 10 NM

GS 3.00° TCH 57

1.1 NM

0.9 NM

2.3 NM

CATEGORY	A	B	C	D
S-ILS 30**	791/24 200 (200-½)			
S-LOC 30	1240/24	649 (700-½)	1240-1¾ 803 (900-2¼)	649 (700-1¾) 823 (900-2¾)
CIRCLING	1240-1	643 (700-1)	803 (900-2¼)	823 (900-2¾)
RONOY FIX MINIMUMS				
S-LOC 30	1000/24	409 (500-½)	1000/40	409 (500-¾)
CIRCLING	1140-1 543 (600-1)	1180-1 583 (600-1)	1400-2¼ 803 (900-2¼)	1420-2¾ 823 (900-2¾)