

WAAS CH 70623 W12A	APP CRS 126°	Rwy Idg 7959 TDZE 597 Apt Elev 597
--	------------------------	---

RNAV (GPS) Y RWY 12
GARY/CHICAGO INTL (GYY)

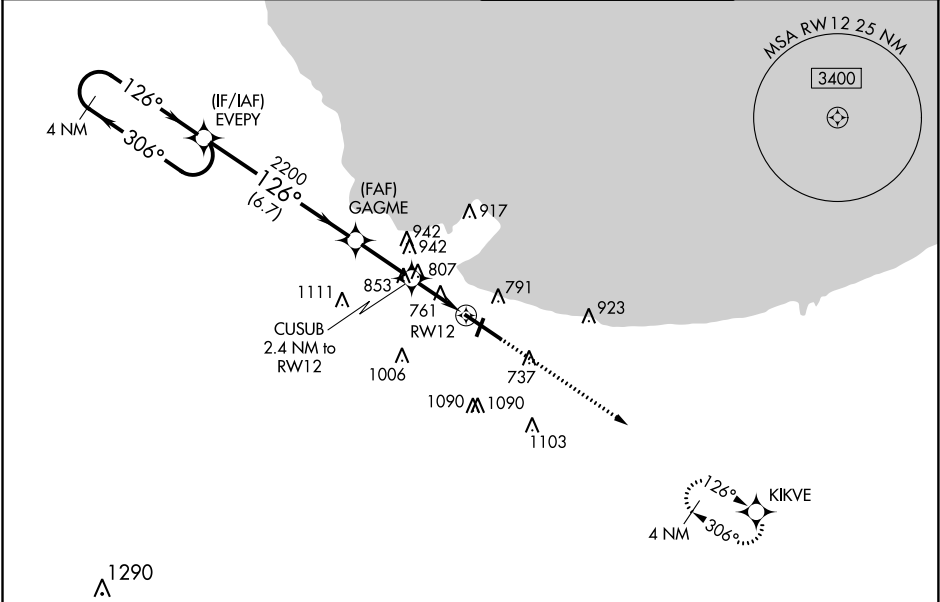
▼

▲

For uncompensated Baro-VNAV systems, LNAV/VNAV NA below -16°C (4°F) or above 54°C (130°F).
DME/DME RNP-0.3 NA.
Rwy 12 helicopter visibility reduction below ¾ SM NA.

MISSED APPROACH:
Climb to 2400 direct KIKVE and hold.

ATIS 134.575	CHICAGO APP CON 133.1 285.6	GARY TOWER ★ 125.6 (CTAF) 0	GND CON 121.9
------------------------	---------------------------------------	---------------------------------------	-------------------------



4 NM Holding Pattern				
EVEPY				
GAGME 2200				
CUSUB 2.4 NM to RW12				
*1.3 NM to RW12				
*1400				
*LNAV only				
2400 KIKVE				
6.7 NM 2.5 NM 1.1 1.3 NM				
CATEGORY	A	B	C	D
LPV DA	797-¾ 200 (200-¾)			
LNAV/VNAV DA	1049-1⅜ 452 (500-1⅜)			
LNAV MDA	1060-1	463 (500-1)	1060-1⅜	463 (500-1⅜)
CIRCLING	1140-1 543 (600-1)	1180-1 583 (600-1)	1400-2¼ 803 (900-2¼)	1420-2¾ 823 (900-2¾)

ELEV 597

TDZE 597

REIL Rwys 2, 12 and 20 0

HIRL Rwy 12-30 0

MIRL Rwy 2-20 0

EC-2, 03 DEC 2020 to 31 DEC 2020

EC-2, 03 DEC 2020 to 31 DEC 2020