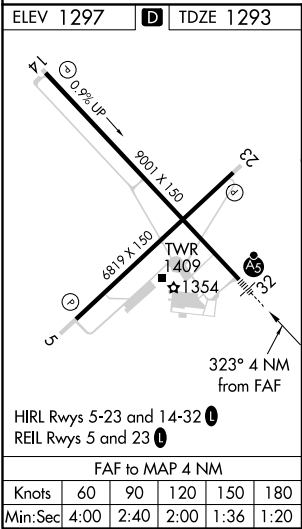
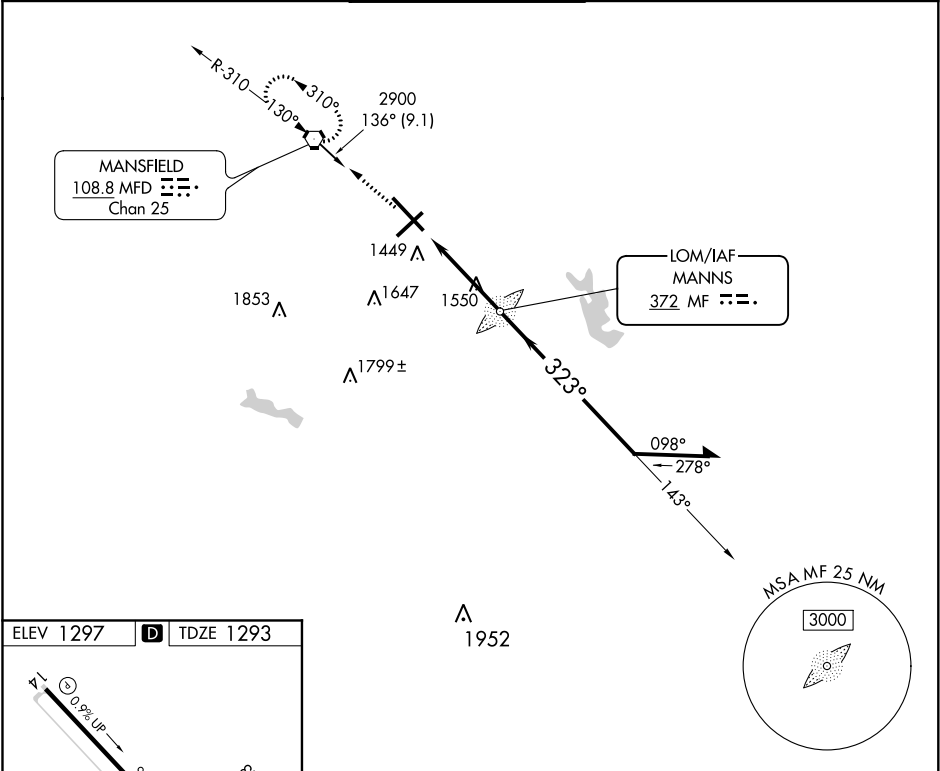


LOM MF 372	APP CRS 323°	Rwy ldg TDZE Apt Elev	9001 1293 1297
----------------------	------------------------	-----------------------------	---

NDB RWY 32
MANSFIELD LAHM RGNL (MFD)

RADAR required for procedure entry.		MALSR 	MISSED APPROACH: Climb to 2900 direct MFD VORTAC and hold.
	For inoperative ALS increase Cats A/B visibility to RVR 5500 and Cats C/D visibility to 1 3/4 SM.		

ATIS 125.3	CLEVELAND APP CON ★ 124.2 360.65	MANSFIELD TOWER ★ 119.8 (CTAF) 291.775	GND CON 121.8 291.775	UNICOM 122.95
----------------------	--	--	---------------------------------	-------------------------



2900 MFD		MF LOM		Remain within 10 NM	
				2900	
3.16° TCH 50		4 NM			
CATEGORY	A	B	C	D	
S-32	1900/40	607 (700-3/4)	1900-13/8	607 (700-13/8)	
CIRCLING	1900-1	603 (700-1)	2000-2 703 (800-2)	2000-2 1/4 703 (800-2 1/4)	