

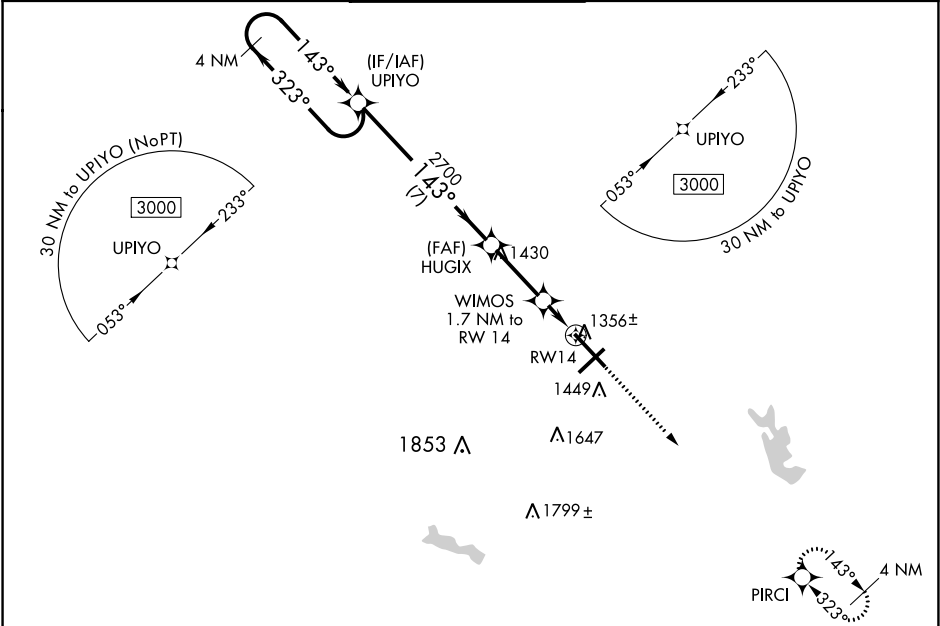
WAAS CH 53426 W14A	APP CRS 143°	Rwy Idg TDZE 1276 Apt Elev 1297
--	------------------------	---

RNAV (GPS) RWY 14
MANSFIELD LAHM RGNL (MFD)

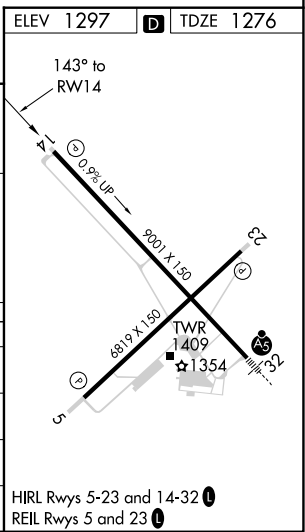
⚠ For uncompensated Baro-VNAV systems, LNAV/VNAV NA below -18°C (0°F) or above 36°C (96°F).
⚠ When local altimeter not received, use Marion altimeter setting and increase all DA 107 feet and all MDA 120 feet, and LPV all Cats visibility to 1 SM, LNAV/VNAV all Cats, and LNAV Cat C/D to 1 3/8 SM. Increase Circling Cat C/D visibility 1/2 SM. VDP and Baro-VNAV NA when using Marion altimeter setting.

MISSED APPROACH:
Climb to 3000 direct
PIRCI and hold.

ATIS 125.3	CLEVELAND APP CON ★ 124.2 360.65	MANSFIELD TOWER ★ 119.8 (CTAF) 291.775	GND CON 121.8 291.775	UNICOM 122.95
----------------------	--	--	---------------------------------	-------------------------



4 NM Holding Pattern		UPIYO		HUGIX		WIMOS 1.7 NM to RW14		PIRCI	
3000		323°		143°		2700		*1820	
GP 3.00°		TCH 42		7 NM		2.7 NM		0.7 NM	
CATEGORY		A		B		C		D	
LPV DA				1476-3/4		200 (200-3/4)			
LNAV/VNAV DA				1557-7/8		281 (300-7/8)			
LNAV MDA				1620-1		344 (400-1)			
CIRCLING		1760-1		463 (500-1)		2000-2		2000-2 1/4	
						703 (800-2)		703 (800-2 1/4)	



EC-2, 03 DEC 2020 to 31 DEC 2020

EC-2, 03 DEC 2020 to 31 DEC 2020