

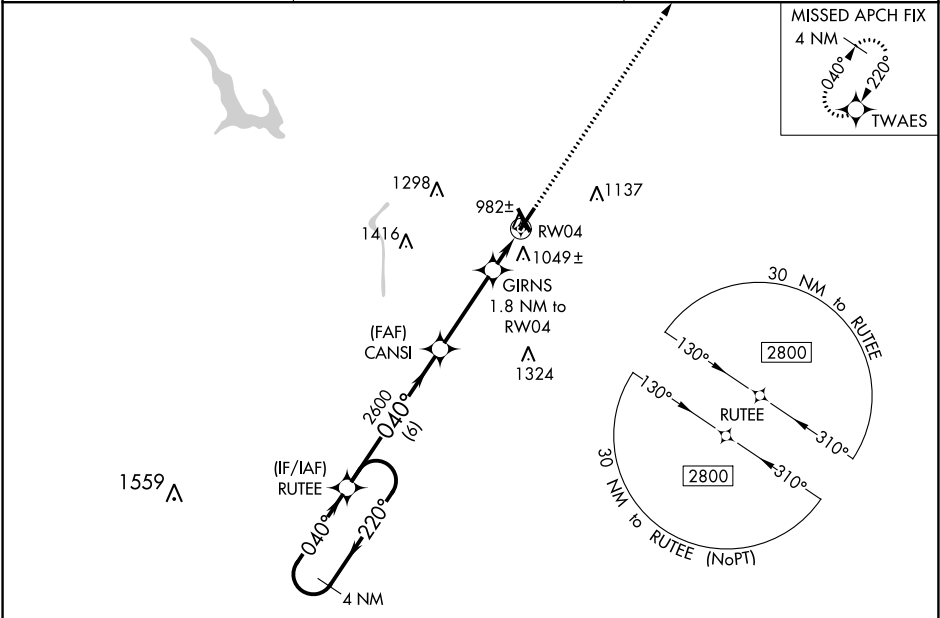
WAAS CH 72639 W04A	APP CRS 040°	Rwy Idg 4999 TDZE 900 Apt Elev 900
--	------------------------	---

RNAV (GPS) RWY 4
ZANESVILLE MUNI (ZZV)

⚠ For uncompensated Baro-VNAV systems, LNAV/VNAV NA below -21°C (-5°F) or above 54°C (130°F). Baro-VNAV and VDP NA when using Newark altimeter setting. DME/DME RNP-0.3 NA. When local altimeter setting not received, use Newark altimeter setting and increase all LPV and LNAV/VNAV DA to 1214 and all visibilities to 1 SM, increase all MDA 80 feet; increase LNAV Cat C/D visibility ½ SM and Circling Cat C/D visibility ¼ SM.

MISSED APPROACH:
Climb to 2900 direct TWAES and hold.

ASOS 114.95	INDIANAPOLIS CENTER 124.45 370.9	UNICOM 123.0 (CTAF) 0*
-----------------------	--	----------------------------------



4 NM Holding Pattern

VGSI and RNAV glidepath not coincident (VGSI Angle 3.00/TCH 35).

2900 TWAES

*LNAV only

GP 3.00° TCH 45

6 NM 3.4 NM 0.8 NM 1 NM

CATEGORY	A	B	C	D
LPV DA	1150-78 250 (300-78)			
LNAV/VNAV DA	1150-78 250 (300-78)			
LNAV MDA	1240-1 340 (400-1)			
CIRCLING	1380-1 480 (500-1)	1400-1 500 (500-1)	1620-2 720 (800-2)	1620-2¼ 720 (800-2¼)

HIRL Rwy 4-22 0*

MIRL Rwy 16-34

REIL Rwy 4, 16, 22 and 34 0*

EC-2, 03 DEC 2020 to 31 DEC 2020

EC-2, 03 DEC 2020 to 31 DEC 2020