
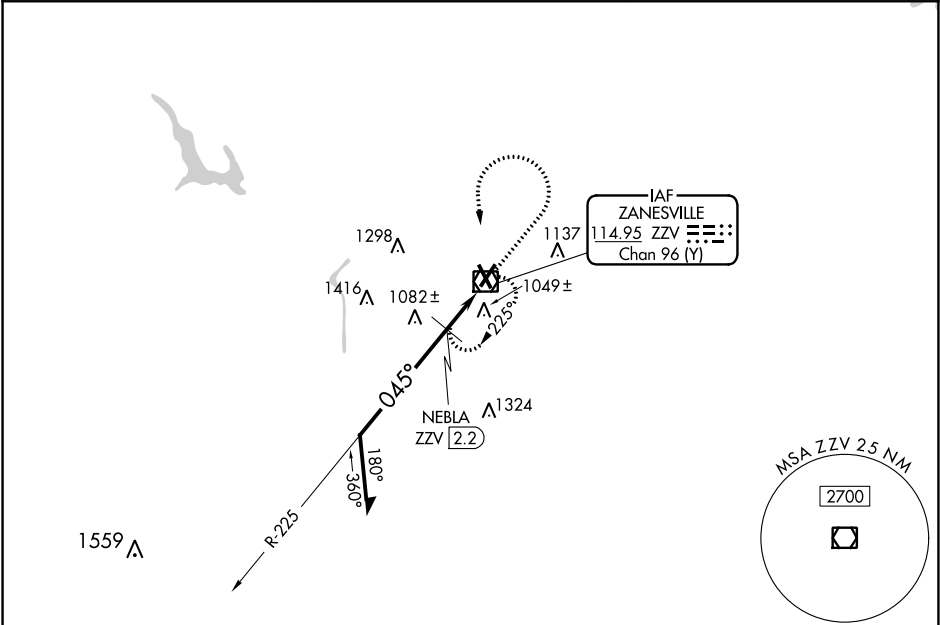


VOR/DME ZZV	APP CRS	Rwy Idg	4999
114.95	045°	TDZE	900
Chan 96 (Y)		Apt Elev	900

VOR RWY 4  
ZANESVILLE MUNI (ZZV)

	VDP NA when using Newark altimeter setting. When local altimeter setting not received, Newark altimeter setting and increase all MDA 80 feet; increase S-4 and Circling Cat B visibility ¼ SM and Cat C/D ½ SM, NEBLA fix minimums increase S-4 Cat C/D visibility ½ SM and Circling Cat C/D ¼ SM.		MISSED APPROACH: Climb to 3000 then left turn direct ZZV VOR/DME and hold.
	ASOS 114.95	INDIANAPOLIS CENTER 124.45 370.9	UNICOM 123.0 (CTAF) 0*



*1680 when using Newark altimeter setting.		ZZV VOR/DME		3000		ZZV	
Remain within 10 NM		2700		225°		NEBLA ZZV (2.2)	
045°		3.12°		TCH 35		ZZV (1.4)	
*1600		0.8 NM		1.2 NM		0.2 NM	
CATEGORY	A	B	C	D			
S-4	1600-1	700 (700-1)	1600-2	700 (700-2)			
<b>C</b> CIRCLING	1600-1	700 (700-1)	1620-2	720 (800-2)	1620-2 ¼	720 (800-2 ¼)	
NEBLA FIX MINIMUMS							
S-4	1340-1	440 (500-1)	1340-1 ¼	440 (500-1 ¼)			
<b>C</b> CIRCLING	1380-1	1400-1	1620-2	720 (800-2)	1620-2 ¼	720 (800-2 ¼)	
ELEV 900 TDZE 900							

