

WAAS CH <b>69223</b> <b>W05A</b>	APP CRS <b>054°</b>	Rwy Idg TDZE <b>1224</b> Apt Elev <b>1224</b>	<b>3318</b>
--	------------------------	---	-------------

RNAV (GPS) RWY 5

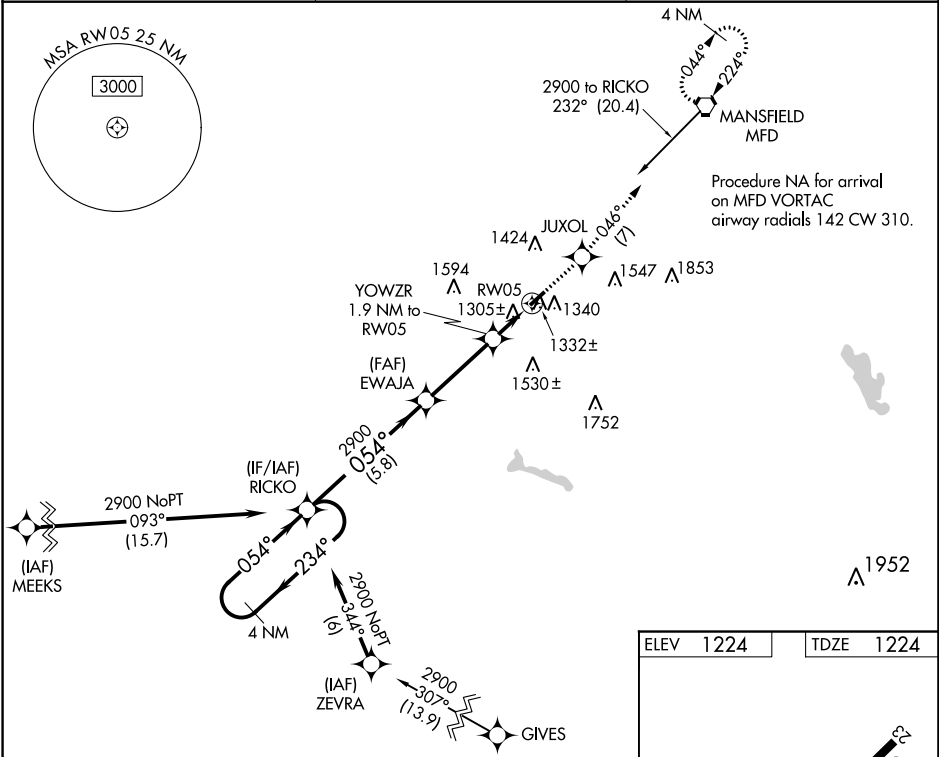
GALLION MUNI (GQQ)

NA

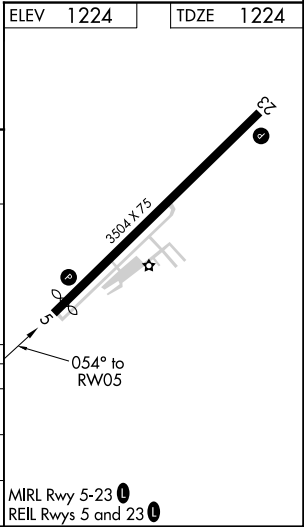
Helicopter visibility reduction below 1 SM NA.  
DME/DME RNP-0.3 NA. Use Mansfield altimeter setting.  
Straight-in Rwy 5 NA at night, Circling Rwy 5 NA at night.

MISSED APPROACH: Climb to 2900 direct JUXOL and on track 046° to MFD VORTAC and hold.

CLEVELAND APP CON ★ <b>124.2 360.65</b>	CLNC DEL <b>126.8</b>	UNICOM <b>122.8 (CTAF) 0</b>
--	--------------------------	---------------------------------



4 NM Holding Pattern				
2900 ← 234° / 054° → 2900				
RICKO      EWAJA      YOWZR 1.9 NM to RW05				
3.00° TCH 31      1840      RW05				
5.8 NM      3.3 NM      1.9 NM				
CATEGORY	A	B	C	D
LP MDA	1600-1 376 (400-1)			NA
LNAV MDA	1620-1	396 (400-1)	1620-1½ 396 (400-1½)	NA
CIRCLING	1800-1	576 (600-1)	1800-1½ 576 (600-1½)	NA



EC-2, 03 DEC 2020 to 31 DEC 2020

EC-2, 03 DEC 2020 to 31 DEC 2020