

VOR/DME MZZ	APP CRS	Rwy Idg	3456
108.6	143°	TDZE	858
Chan 23		Apt Elev	859

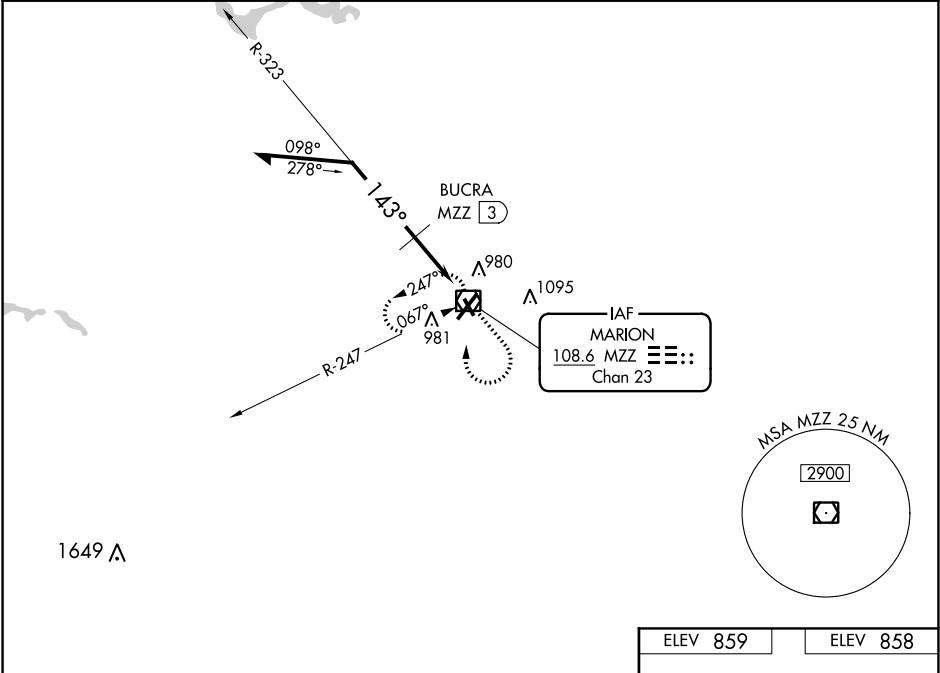
VOR RWY 15
MARION MUNI (MZZ)

NA

When local altimeter setting not received, use Fort Wayne Intl altimeter setting and increase all MDA 100 feet, increase S-15 Cat B/C/D visibility $\frac{1}{4}$ SM, increase Circling Cat B/C/D visibility $\frac{1}{2}$ SM; BUCRA fix minimums: increase S-15 Cat C/D visibility $\frac{3}{8}$ SM, increase Circling Cat C/D visibility $\frac{1}{2}$ SM. Rwy 15 helicopter visibility reduction below $\frac{3}{4}$ SM NA.

MISSED APPROACH:
Climb to 2400 then right turn direct MZZ VOR/DME and hold.

AWOS-3 108.6	GRISSEM APP CON ★ 121.05 338.275	CLNC DEL 120.0	UNICOM 122.7 (CTAF) 0
-----------------	-------------------------------------	-------------------	--------------------------



Remain within 10 NM

MZZ VOR/DME

2400

BUCRA MZZ 3

*1600 when using Fort Wayne altimeter setting.

323°

143°

1500

2.9 NM

0.1

CATEGORY	A	B	C	D
S-15	1500-1	642 (700-1)	1500-1 $\frac{3}{4}$ 642 (700-1 $\frac{3}{4}$)	1500-2 642 (700-2)
CIRCLING	1500-1	641 (700-1)	1500-1 $\frac{7}{8}$ 641 (700-1 $\frac{7}{8}$)	1500-2 641 (700-2)
BUCRA FIX MINIMUMS				
S-15	1240-1	382 (400-1)	1240-1 $\frac{1}{4}$ 382 (400-1 $\frac{1}{4}$)	
CIRCLING	1300-1 441 (500-1)	1320-1 461 (500-1)	1400-1 $\frac{1}{2}$ 541 (600-1 $\frac{1}{2}$)	1500-2 641 (700-2)

ELEV 859

ELEV 858

143° to MZZ VOR/DME

22

15

8011 X 100

3456 X 100

923

4

33

HIRL Rwy 4-22 0

MIRL Rwy 15-33 0

REIL Rws 15, 22, and 33 0