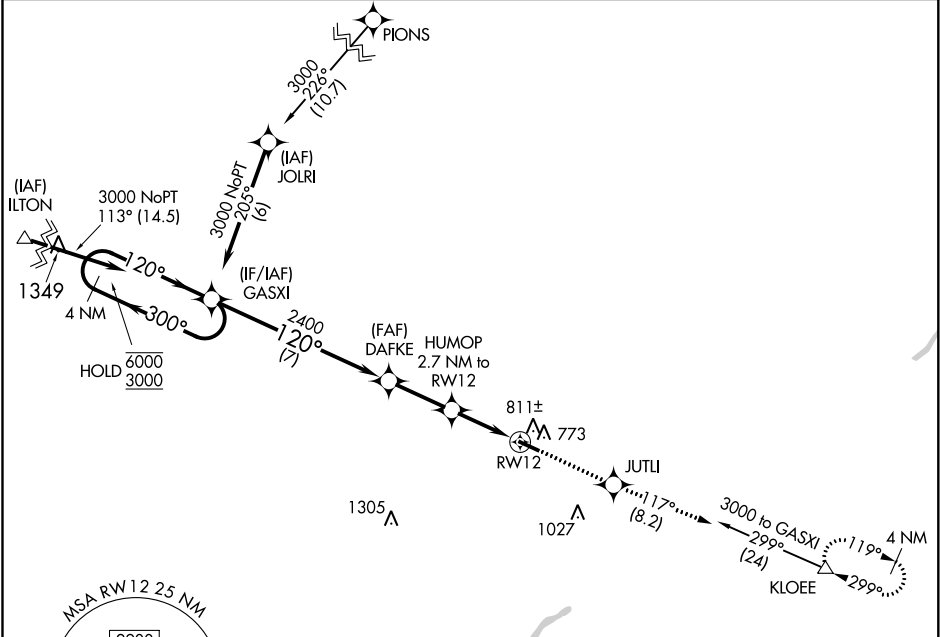


APP CRS	Rwy Idg	<b>4199</b>
<b>120°</b>	TDZE	<b>707</b>
	Apt Elev	<b>707</b>

**RNAV (GPS) RWY 12**  
DEFIANCE MEMORIAL (DFI)

RNP APCH.	MISSED APPROACH: Climb to 3000 direct JUTLI and on track 117° to KLOEE and hold.
Circling Rwy 30 NA at night. Rwy 12 helicopter visibility reduction below 3/4 SM NA.	

ASOS <b>121.425</b>	TOLEDO APP CON <b>134.35 307.0</b>	UNICOM <b>122.7 (CTAF) 0</b>
------------------------	---------------------------------------	---------------------------------



ELEV 707      TDZE 707

4 NM Holding Pattern				
VGSI and descent angles not coincident (VGSI Angle 3.00/TCH 26).				
GASXI				
DAFKE				
HUMOP 2.7 NM to RWY 12				
JUTLI				
KLOEE				
120° to RWY 12				
4199 X 72				
RWY 12				
RWY 30				

CATEGORY	A	B	C	D
RNAV MDA	1100-1	393 (400-1)	1100-1 1/8	393 (400-1 1/8)
CIRCLING	1140-1 433 (500-1)	1160-1 453 (500-1)	1380-2 673 (700-2)	1380-2 1/4 673 (700-2 1/4)

REIL Rwy 12 and 30 0  
MIRL Rwy 12-30 0

EC-2, 03 DEC 2020 to 31 DEC 2020

EC-2, 03 DEC 2020 to 31 DEC 2020