

WAAS CH 50511 W28A	APP CRS 276°	Rwy Idg TDZE Apt Elev	6000 975 975
--	------------------------	-----------------------------	---

RNAV (GPS) RWY 28

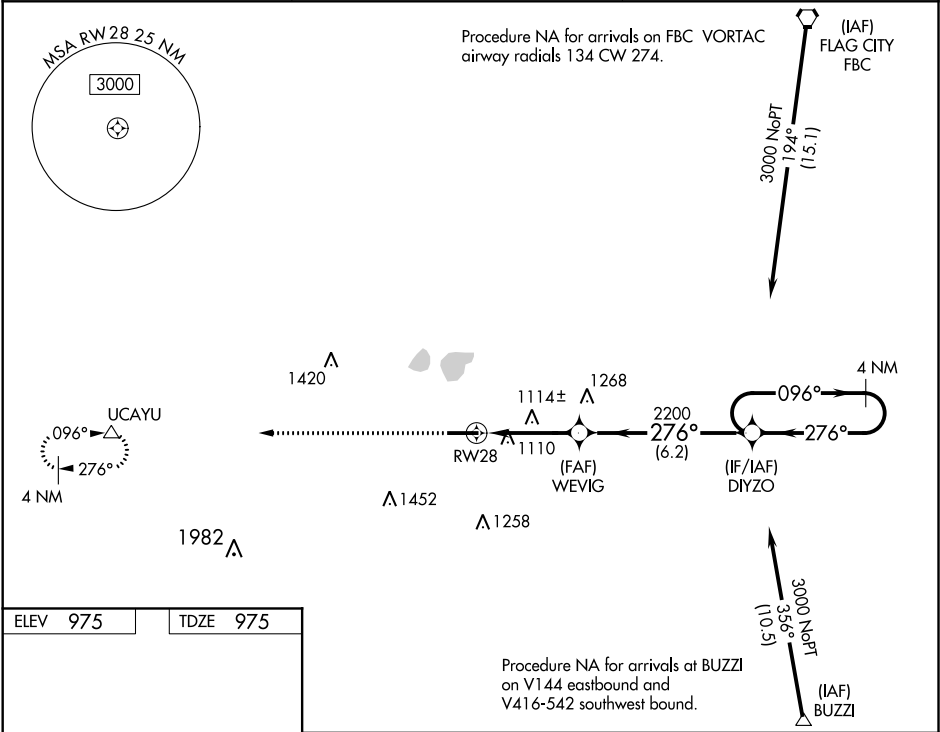
LIMA ALLEN COUNTY (AOH)

⚠

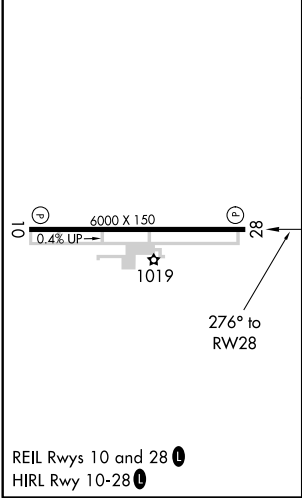
Baro-VNAV NA when using Findlay altimeter setting. For uncompensated Baro-VNAV systems, LNAV/VNAV NA below -16°C (4°F) or above 37°C (98°F). When local altimeter setting not received, use Findlay altimeter setting and increase all DA and MDA 80 feet. Increase LPV all Cats visibility ½ mile, LNAV/VNAV all Cats and LNAV Cats C/D visibility ¼ mile. DME/DME RNP-0.3 NA. VDP NA with Findlay altimeter setting.

MISSED APPROACH:
Climb to 3000 direct UCAYU and hold.

ASOS 128.725	COLUMBUS APP CON 118.425 323.15	UNICOM 122.7 (CTAF) 0
------------------------	---	---------------------------------



ELEV 975	TDZE 975
----------	----------



3000	UCAYU	VGSI and RNAV glidepath not coincident (VGSI Angle 3.00/TCH 46).	4 NM	Holding Pattern
			DIYZO	
*LNAV only		WEVIG		
		2200		
		2200		
		1.1 NM	2.6 NM	6.2 NM
				3000
				GP 3.00° TCH 49
CATEGORY	A	B	C	D
LPV DA		1175-¾	200 (200-¾)	
LNAV/VNAV DA		1397-1⅓	422 (500-1⅓)	
LNAV MDA	1380-1	405 (500-1)	1380-1½	405 (500-1½)
CIRCLING	1420-1 445 (500-1)	1440-1 465 (500-1)	1440-1½ 465 (500-1½)	1540-2 565 (600-2)