

LOC I-BMG	APP CRS	Rwy Idg	6500
108.3	354°	TDZE	844
		Apt Elev	846

ILS or LOC/DME RWY 35

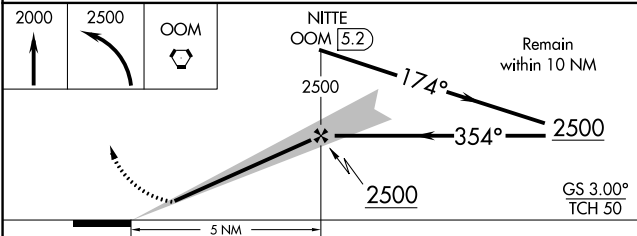
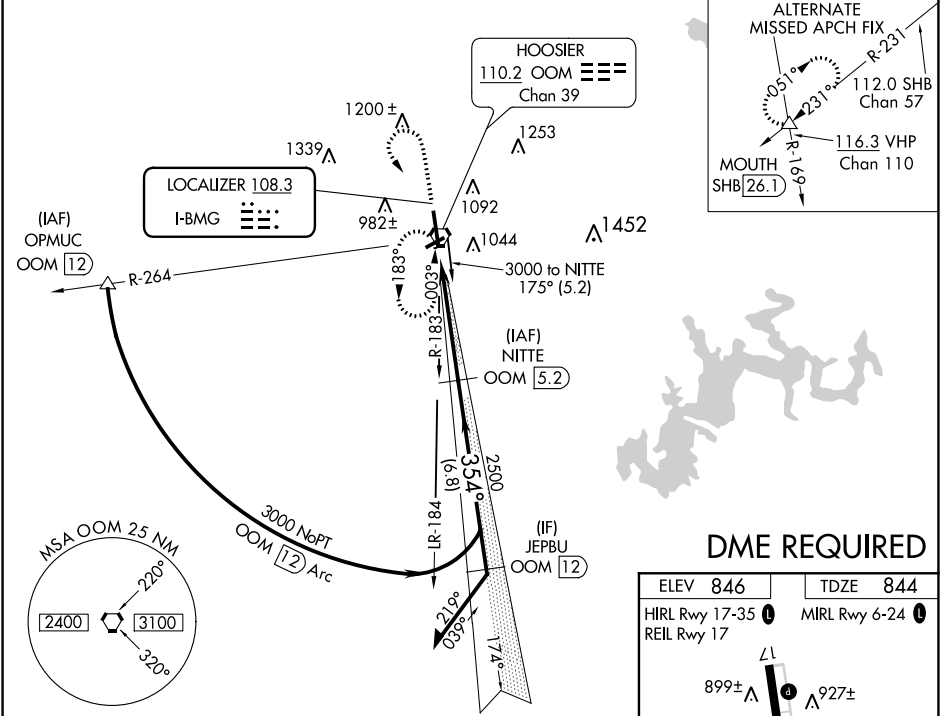
MONROE COUNTY (BMG)

⚠ Circling to Rwy 6/24 NA at night. When local altimeter setting not received, use Terre Haute Rgnl altimeter setting and increase all DA 121 feet and all MDA 140 feet and increase S-ILS 35 all Cats visibility ¼ mile, S-LOC 35 Cat C, D and Circling Cat C visibility ½ mile and Circling Cat D visibility ½ mile. For inoperative MALSR when using Terre Haute Rgnl altimeter setting: increase S-ILS 35 all Cats visibility to 1¼ miles. DME from OOM VORTAC. Simultaneous reception of I-BMG and OOM DME required.

MALSR

MISSED APPROACH:
Climb to 2000 then climbing left turn to 2500 direct OOM VORTAC and hold.

ASOS 110.2	HULMAN APP CON 128.025 339.8	BLOOMINGTON TOWER★ 120.775 (CTAF) 0	GND CON 121.9	UNICOM 122.95
---------------	---------------------------------	--	------------------	------------------



CATEGORY	A	B	C	D
S-ILS 35		1044-½ 200 (200-½)		
S-LOC 35	1420-½ 576 (600-½)		1420-1 576 (600-1)	1420-1¼ 576 (600-1¼)
CIRCLING	1420-1 574 (600-1)		1420-1½ 574 (600-1½)	1420-2 574 (600-2)

