

WAAS CH <b>72812</b> <b>W35A</b>	APP CRS <b>354°</b>	Rwy Idg TDZE Apt Elev	<b>6500</b> <b>844</b> <b>846</b>
--	------------------------	-----------------------------	---

RNAV (GPS) RWY 35

MONROE COUNTY (BMG)

▼

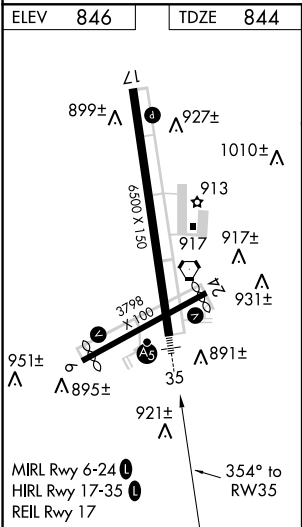
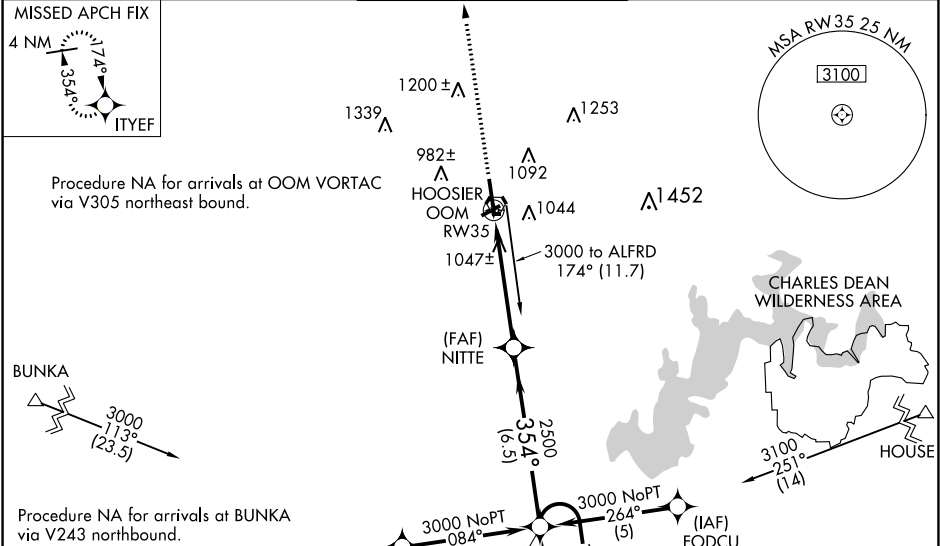
▲

For uncompensated Baro-VNAV systems, LNAV/VNAV NA below -16°C (4°F) or above 47°C (116°F). DME/DME RNP-0.3 NA. When local altimeter setting not received, use Terre Haute Rgnl altimeter setting and increase all DA 121 feet and all MDA 140 feet and increase LPV all Cats, LNAV Cat C, D and Circling Cat D visibility ½ mile, LNAV/VNAV all Cats and Circling C visibility ½ mile. For inoperative MALSR when using Terre Haute Rgnl altimeter setting: increase LPV all Cats visibility ½ mile. Baro-VNAV and VDP NA when using Terre Haute Rgnl altimeter setting. Circling to Rwy 6/24 NA at night.

MALSR

MISSED APPROACH:  
Climb to 3000 direct  
ITYEF and hold.

ASOS <b>110.2</b>	HULMAN APP CON <b>128.025 339.8</b>	BLOOMINGTON TOWER ★ <b>120.775 (CTAF)</b>	GND CON <b>121.9</b>	UNICOM <b>122.95</b>
----------------------	--	--	-------------------------	-------------------------



3000 ITYEF

\*LNAV only

\*1.3 NM to RW35

RW35

NITTE

ALFRD

Holding Pattern

174°

354°

3000

GP 3.00°

TCH 50

1.3 NM

3.7 NM

6.5 NM

CATEGORY	A	B	C	D
LPV DA	1044-1½		200 (200-1½)	
LNAV/VNAV DA	1344-1¼		500 (500-1¼)	
LNAV MDA	1300-1½	456 (500-½)	1300-¾	1300-1
			456 (500-¾)	456 (500-1)
CIRCLING	1380-1	1400-1	1400-1½	1400-2
	534 (600-1)	554 (600-1)	554 (600-1½)	554 (600-2)