

LOC/DME I-RQF
109.75
Chan **34 (Y)**

APP CRS
295°

Rwy Idg **5500**
TDZE **619**
Apt Elev **633**

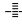
ILS or LOC RWY 29

BUTLER COUNTY RGNL-HOGAN FIELD (HAO)

ADF required. DME required for LOC only.

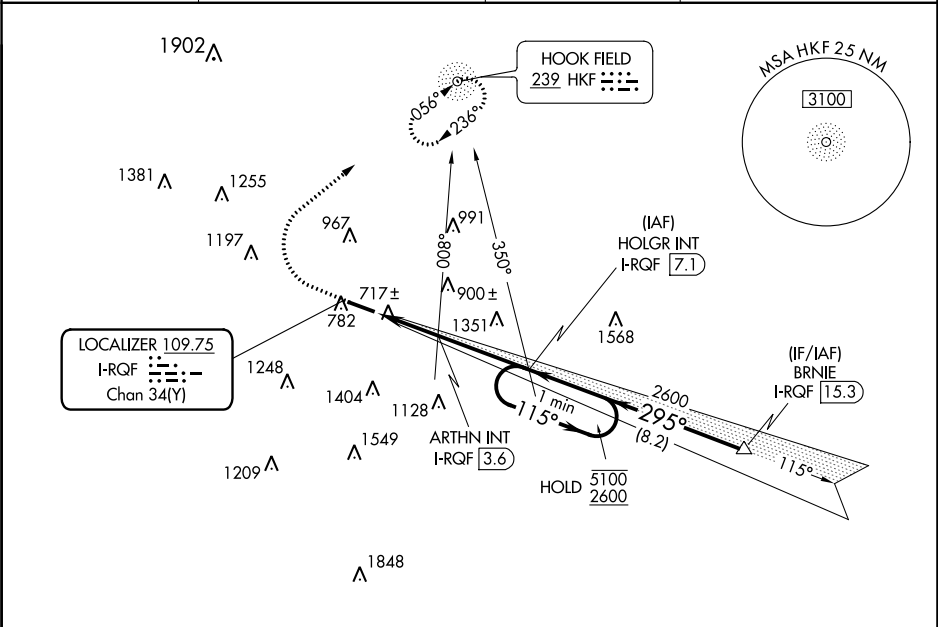
▼

Inop table does not apply to S-ILS 29. For inop ALS, increase S-LOC-29 Cat C/D visibility to 2½ SM. ARTHN fix minimums: for inop ALS, increase S-LOC 29 Cat C/D visibility to 1¾ SM.

MALS


MISSED APPROACH: Climb to 1600 then climbing right turn to 2600 direct HKF NDB and hold.

ASOS 121.425	CINCINNATI APP CON 121.0 254.25	CLNC DEL 126.25	UNICOM 123.05 (CTAF) 0
------------------------	---	---------------------------	----------------------------------



1600

2600

HKF

*LOC only.

I-RQF

1.1

*I-RQF

2.5

ARTHN INT

I-RQF

3.6

HOLGR INT

I-RQF

7.1

One Minute Holding Pattern

115°

295°

2600

5100

2600

GS 3.00°

TCH 46

VGSI and ILS glidepath not coincident, (VGSI Angle 3.00/TCH 47°).

1.4 NM

1.1 NM

3.5 NM

ELEV 633

TDZE 619

ARTHN INT

I-RQF

3.6

HOLGR INT

I-RQF

7.1

One Minute Holding Pattern

115°

295°

2600

5100

2600

GS 3.00°

TCH 46

VGSI and ILS glidepath not coincident, (VGSI Angle 3.00/TCH 47°).

1.4 NM

1.1 NM

3.5 NM

CATEGORY	A	B	C	D
S-ILS 29	819-¾	200 (200-¾)		
S-LOC 29	1440-¾ 821 (900-¾)	1440-1 821 (900-1)	1440-2 821 (900-2)	
CIRCLING	1440-1 807 (900-1)		1440-2½ 807 (900-2½)	1760-3 1127 (1200-3)
	ARTHN FIX MINIMUMS			
S-LOC 29	1120-¾ 501 (500-¾)	1120-1¼ 501 (500-1¼)		
CIRCLING	1160-1 527 (600-1)	1260-1 627 (700-1)	1300-1¾ 667 (700-1¾)	1760-3 1127 (1200-3)

MIRL Rwy 11-29 0
REIL Rwys 11 and 29 0

FAF to MAP 6 NM

Knots	60	90	120	150	180
Min:Sec	6:00	4:00	3:00	2:24	2:00