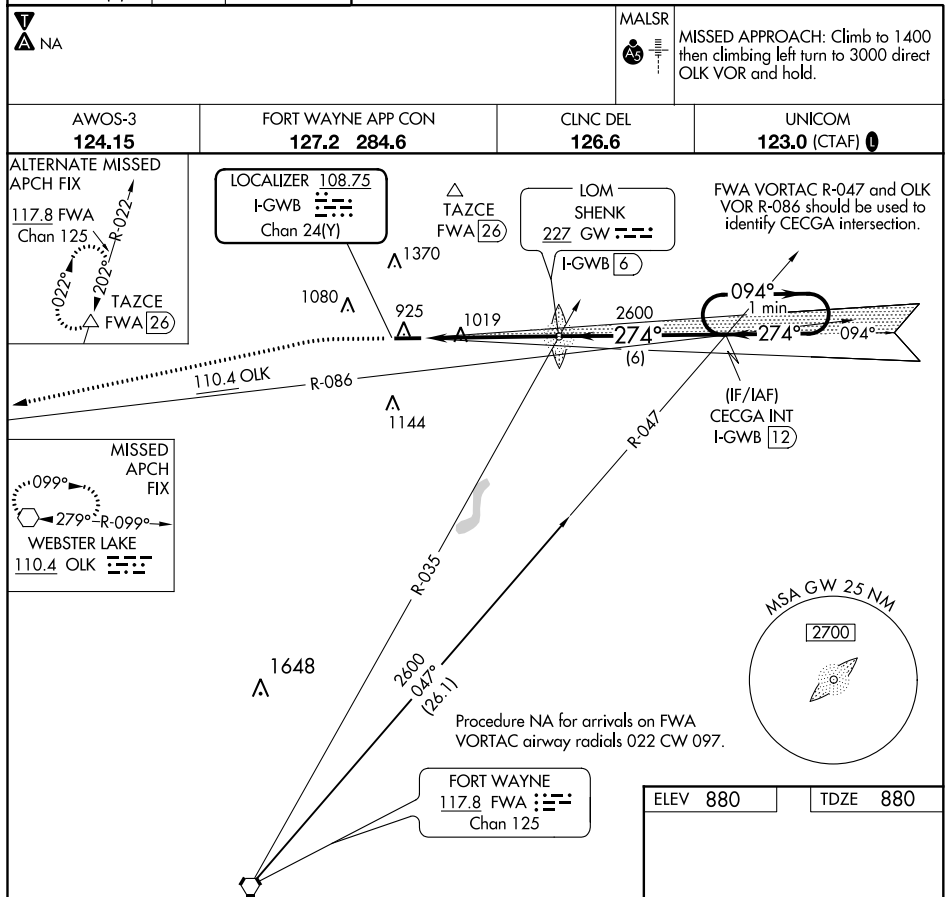


LOC/DME I-GWB <u>108.75</u> Chan 24 (Y)	APP CRS <b>274°</b>	Rwy Idg <b>5000</b> TDZE <b>880</b> Apt Elev <b>880</b>
---	------------------------	---

ILS or LOC RWY 27  
DE KALB COUNTY (GWB)



**Diagram 1: Standard Instrument Departures (SIDs) for Runway 27**

The diagram shows the departure path from Runway 27. Key features include:

- Runway 27:** 5000 x 100 feet.
- Obstacle:** 274° 5 NM from FAF.
- Departure Path:**
  - Initial Climb:** 1.2 NM, 3.8 NM, 6 NM.
  - Altitudes:** 2546, 2600.
  - Angles:** 094°, 274°.
  - GS 3.00° TCH 46.**
- Obstacles:** SHENK LOM/INT (I-GWB 6), CECGA INT (I-GWB 12).
- Obstacle Clearance:** 274° 5 NM from FAF.

**Table 1: Standard Instrument Departures (SIDs) for Runway 27**

CATEGORY	A	B	C	D
S-ILS 27	1080-½	200 (200-½)		
S-LOC 27	1320-½ 440 (500-½)	1320-¾ 440 (500-¾)	1320-1 440 (500-1)	
<b>C</b> CIRCLING	1320-1 440 (500-1)	1560-1 680 (700-1)	1720-2½ 840 (900-2½)	1720-2¾ 840 (900-2¾)

**Table 2: FAF to MAP 5 NM**

Knots	60	90	120	150	180
Min:Sec	5:00	3:20	2:30	2:00	1:40

**Diagram 2: Holding Pattern**

The diagram shows a holding pattern for Runway 27. Key features include:

- Runway 27:** 5000 x 100 feet.
- Obstacle:** 274° 5 NM from FAF.
- Holding Pattern:** One Minute Holding Pattern.

EC-2, 03 DEC 2020 to 31 DEC 2020

EC-2, 03 DEC 2020 to 31 DEC 2020