
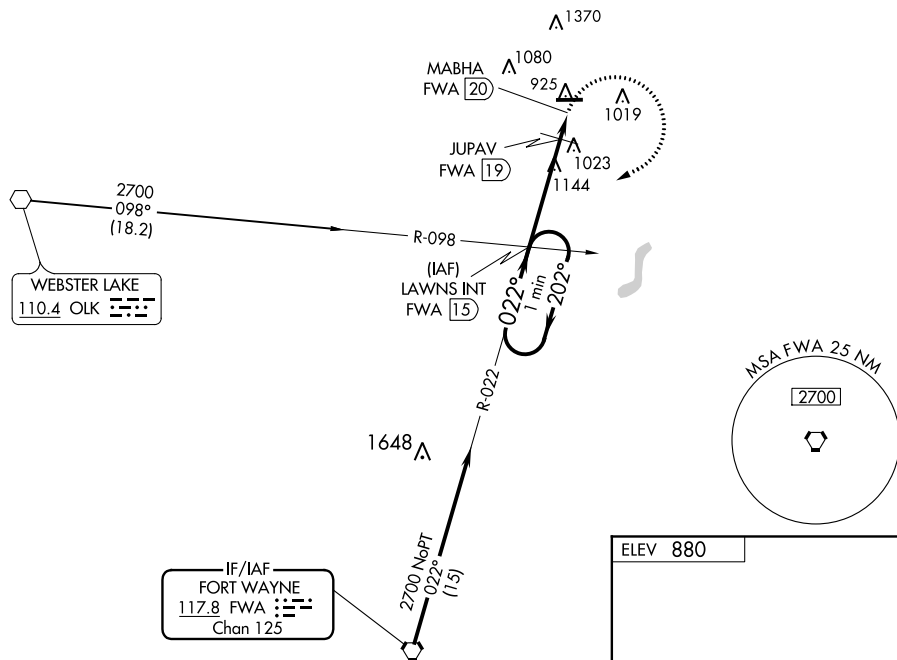


VORTAC FWA 117.8 Chan 125	APP CRS 022°	Rwy Idg N/A TDZE N/A Apt Elev 880
---	------------------------	--

VOR-A
DE KALB COUNTY (GWB)

	MISSED APPROACH: Climbing right turn to 2700 on FWA R-022 to LAWNS INT/FWA 15 DME and hold.	
	AWOS-3 124.15	FORT WAYNE APP CON 127.2 284.6



CATEGORY	A	B	C	D
C CIRCLING	1500-1 620 (700-1)	1560-1 680 (700-1)	1720-2½ 840 (900-2½)	1720-2¾ 840 (900-2¾)

JUPAV FIX MINIMUMS				
C	A	B	C	D
C CIRCLING	1360-1 480 (500-1)	1560-1 680 (700-1)	1720-2½ 840 (900-2½)	1720-2¾ 840 (900-2¾)

FAF to MAP 5 NM					
Knots	60	90	120	150	180
Min:Sec	5:00	3:20	2:30	2:00	1:40