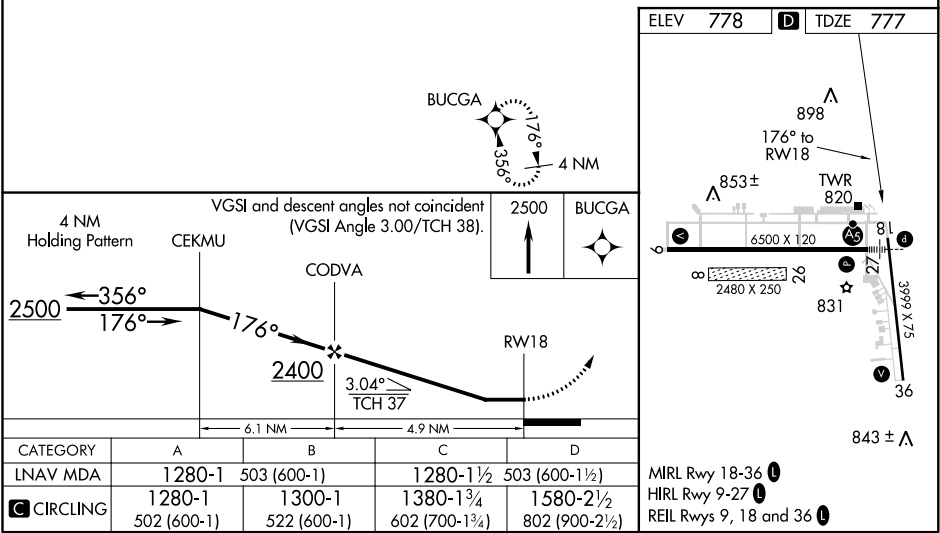
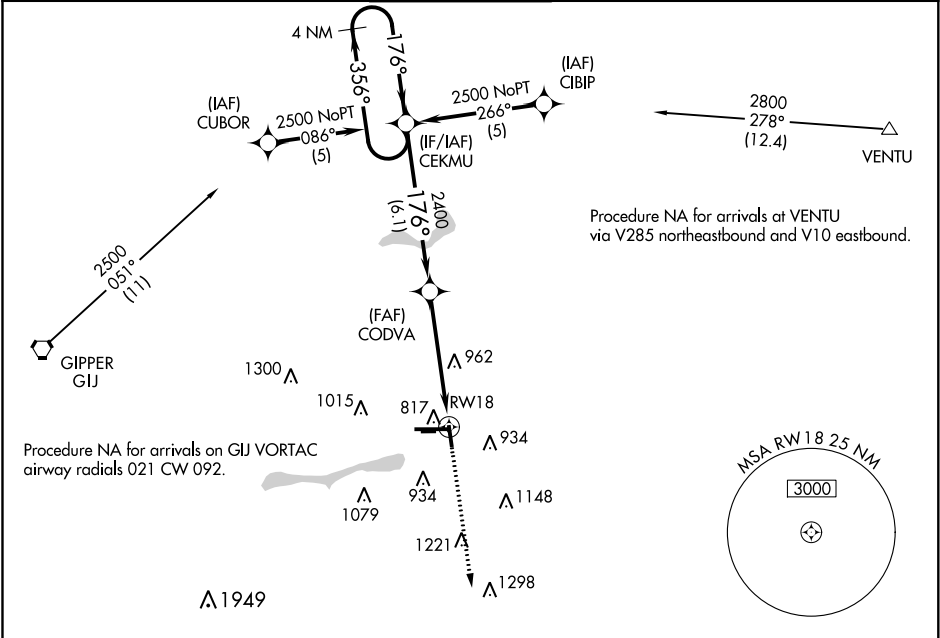


APP CRS	Rwy Idg	3999
176°	TDZE	777
	Apt Elev	778

RNAV (GPS) RWY 18  
ELKHART MUNI (EKM)

RNP APCH				MISSED APPROACH: Climb to 2500 direct BUCCA and hold.	
When local altimeter setting not received, use South Bend altimeter setting and increase all MDA 40 feet. Circling Rwy 36 NA at night. Circling NA to Rwy 8 and 26. Rwy 18 helicopter visibility reduction below ¼ SM NA.					
AWOS-3 124.475	SOUTH BEND APP CON ★ 118.55 257.8	ELKHART TOWER ★ 119.5 (CTAF) 0	GND CON 121.8	CLNC DEL 121.8	UNICOM 122.95



EC-2, 03 DEC 2020 to 31 DEC 2020

EC-2, 03 DEC 2020 to 31 DEC 2020