

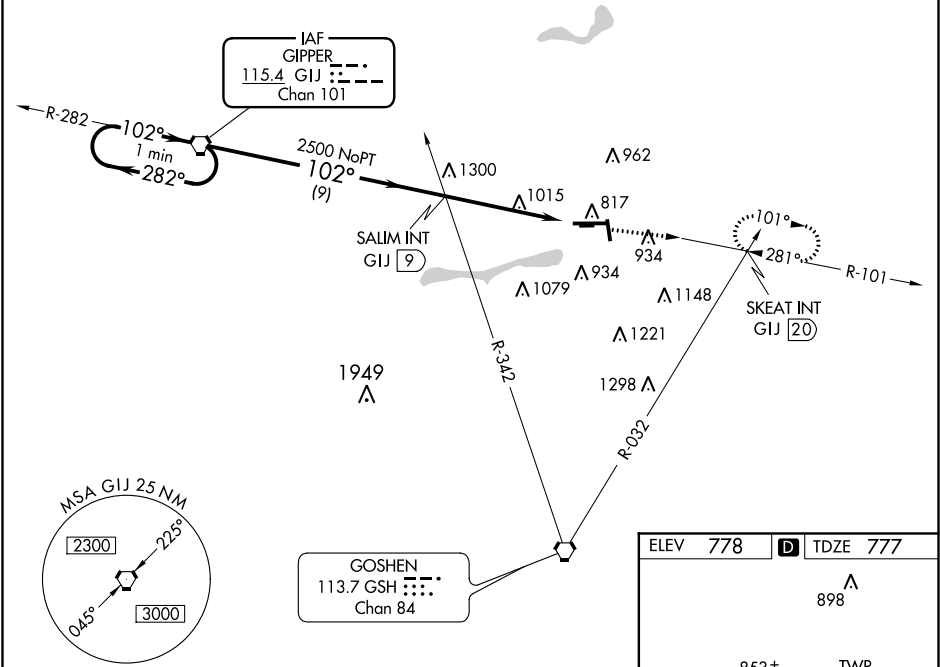
| | | |
|--|------------------------|---|
| VORTAC GJ 115.4 Chan 101 | APP CRS 102° | Rwy Idg TDZE 777 Apt Elev 778 |
|--|------------------------|---|

VOR RWY 9
ELKHART MUNI (EKM)

| | |
|--|--|
| ⚠ Circling Rwy 36 NA at night. Circling NA to Rwy 8 and 26. Rwy 9 helicopter visibility reduction below 3/4 SM NA. When local altimeter setting not received, use South Bend altimeter setting and increase all MDA 40 feet. VDP NA when using South Bend altimeter setting. | MISSED APPROACH: Climb to 2500 via GJ R-101 to SKEAT INT/GJ 20 DME and hold. |
|--|--|

| | | | | | |
|--------------------------|---|--|-------------------------|--------------------------|-------------------------|
| AWOS-3 124.475 | SOUTH BEND APP CON ★ 118.55 257.8 | ELKHART TOWER ★ 119.5 (CTAF) 0 | GND CON 121.8 | CLNC DEL 121.8 | UNICOM 122.95 |
|--------------------------|---|--|-------------------------|--------------------------|-------------------------|

NoPT for arrivals on GJ VORTAC
airway radials 209 CW 310.



| | | | | | |
|--|-----------|----------------|-------------------------|-------------------------|-----------|
| One Minute Holding Pattern | GJ VORTAC | SALIM INT GJ 9 | 2500 | GJ R-101 | SKEAT INT |
| 2500 | 282° | 102° | 2500 | GJ 12.1 | GJ 13.7 |
| VGSI and descent angles not coincident (VGSI Angle 3.00/TCH 38). | | | | | |
| 3.35° TCH 49 | | | | | |
| 9 NM 3.1 NM 1.6 NM | | | | | |
| CATEGORY | A | B | C | D | |
| S-9 | 1340-1 | 563 (600-1) | 1340-1½ 563 (600-1½) | 1340-1¾ 563 (600-1¾) | |
| CIRCLING | 1340-1 | 562 (600-1) | 1380-1¾ 602 (700-1¾) | 1580-2½ 802 (900-2½) | |

