

WAAS CH 70703 W27A	APP CRS 273°	Rwy Idg 5001 TDZE 738 Apt Elev 738
----------------------------------------	------------------------	---------------------------------------------------------------

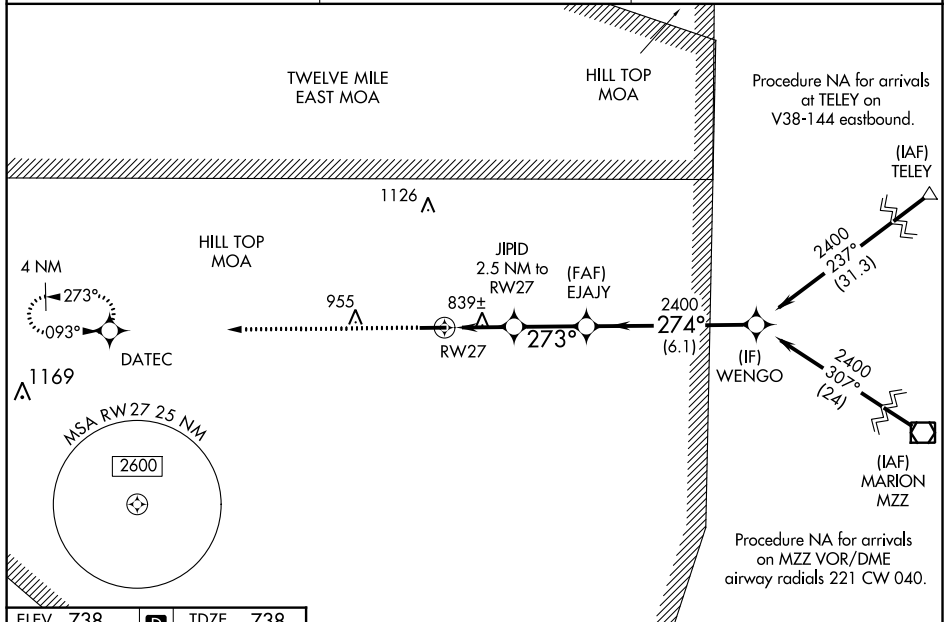
RNAV (GPS) RWY 27

▼ Baro-VNAV NA when using Grissom ARB altimeter setting. For uncompensated Baro-VNAV systems, LNAV/VNAV NA below -16°C (4°F) or above 39°C (102°F). DME/DME RNP-0.3 NA.

▲ NA VDP NA with Grissom ARB altimeter setting. Obtain local altimeter setting on CTAF; when not received, use Grissom ARB altimeter setting and increase all DA 36 feet, all MDA 40 feet and LNAV/VNAV all Cats visibility $\frac{1}{4}$ mile and LNAV Cat C/D visibility $\frac{1}{8}$ mile.

MISSED APPROACH:
Climb to 2500 direct
DATEC and hold.

AWOS-3P 118.5	GRISCOM APP CON★ 121.05 338.275	UNICOM 122.8 (CTAF) 0
-------------------------	-------------------------------------------	---------------------------------



ELEV 738	D	TDZE 738
----------	----------	----------

VGSJ and RNAV glidepath not coincident
(VGSJ Angle 3.00/TCH 25).

* LNAV only

RW27

JIPID
2.5 NM to RW27

EJAY
2400

WENGO

2400

273°

274°

2400

GP 3.00°
TCH 40

CATEGORY	A	B	C	D
LPV DA	938-¾ 200 (200-¾)			
LNAV/ VNAV DA	1020-⅞ 282 (300-⅞)			
LNAV MDA	1100-1 362 (400-1)			
CIRCLING	1160-1 422 (500-1)	1200-1 462 (500-1)	1200-1½ 462 (500-1½)	1300-2 562 (600-2)

MIRL Rwy 9-27 **L**
REIL Rwy 9 and 27 **L**

LOGANSPORT, INDIANA

Amdt 1A 05MAR15

40°43'N-86°22'W

LOGANSPORT/CASS COUNTY (GGP)

RNAV (GPS) RWY 27