

(MAREO5.MAREO) 20086  
MAREO FIVE DEPARTURE

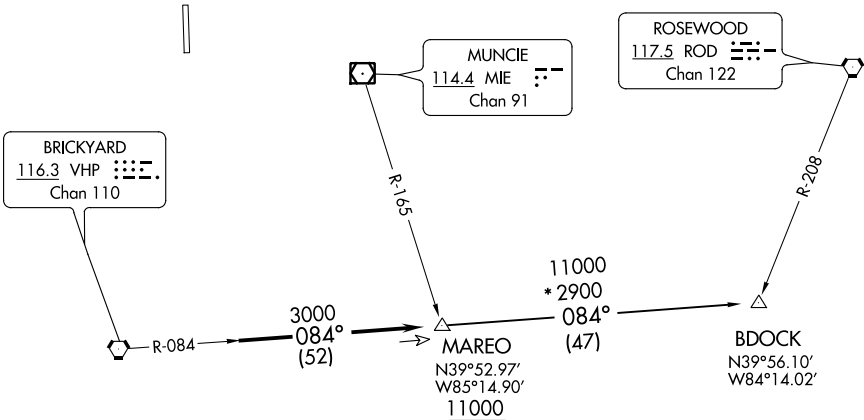
AL-5438 (FAA)

INDIANAPOLIS EXECUTIVE (TYQ)  
INDIANAPOLIS, INDIANA

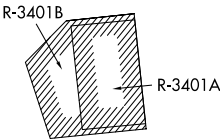
AWOS-3PT  
120.725  
INDIANAPOLIS DEP CON  
124.65 127.15 317.8

TAKEOFF MINIMUMS  
Rwy 18, 36: Standard.

TOP ALTITUDE:  
ASSIGNED BY ATC



- NOTE: RADAR required.
- NOTE: Select appropriate localizer/DME frequency/channel prior to departure.
- NOTE: Turbojets accelerate to 250K until reaching 10000, if unable advise ATC.
- NOTE: Assigned to aircraft with a requested altitude of 11000 or above.



NOTE: Chart not to scale.



DEPARTURE ROUTE DESCRIPTION

DEPARTING ALL OTHER AUTHORIZED RUNWAYS: Climb on assigned heading to assigned altitude. Thence....

....expect RADAR vectors to join VHP R-084 to MAREO INT then via transition or assigned route. Expect clearance to requested altitude ten minutes after departure.

BDOCK TRANSITION (MAREO5.BDOCK): From over MAREO INT via VHP R-084 to BDOCK INT.