

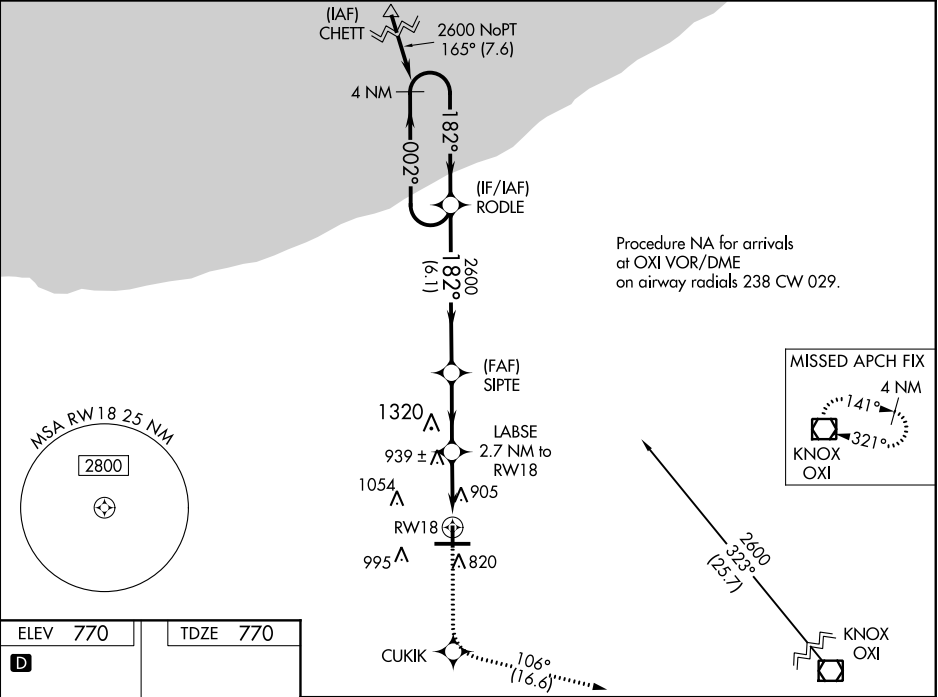
WAAS CH 82406 W18A	APP CRS 182°	Rwy Idg TDZE Apt Elev	4001 770 770
--	------------------------	-----------------------------	---

RNAV (GPS) RWY 18
PORTER COUNTY RGNL (VPZ)

⚠ For uncompensated Baro-VNAV systems, procedure NA below -16°C (4°F) or above 54°C (130°F). DME/DME RNP -0.3 NA. When local altimeter setting not received, use Lansing Muni altimeter setting and increase all DA 77 feet and all MDA 80 feet, and increase LPV and LNAV/VNAV all Cals visibility ¼ mile. Baro-VNAV and VDP NA when using Lansing Muni altimeter setting. Helicopter visibility reduction below ¾ SM NA.

MISSED APPROACH:
Climb to 2600 direct CUKIK and on track 106° to OXI VOR/DME and hold.

ASOS 125.875	SOUTH BEND APP CON ★ 132.05 257.8	CLNC DEL 120.525	UNICOM 122.725 (CTAF) 0
------------------------	---	----------------------------	-----------------------------------



ELEV 770 TDZE 770

D

182° to RWY 18

81 858 4001 X 75 7001 X 150 36 809

HIRL Rwy 9-27 0
MIRL Rwy 18-36 0
REIL Rwy 9, 18 and 36 0

2600 CUKIK	tr 106°	OXI	VGSI and RNAV glidepath not coincident (VGSI Angle 3.00/TCH 24).	4 NM Holding Pattern
*LNAV only.	LABSE 2600	SIPTTE 2600	RODLE 2600	GP 3.00° TCH 40°
*1.3 NM to RWY 18	*2.7 NM to RWY 18	*1660		
1.3 NM	1.4 NM	2.8 NM	6.1 NM	
CATEGORY	A	B	C	D
LPV DA	1120-1¼	350 (400-1¼)	NA	NA
LNAV/VNAV DA	1233-1¾	463 (500-1¾)	NA	NA
LNAV MDA	1200-1	430 (500-1)	NA	NA
CIRCLING	1260-1 490 (500-1)	1300-1 530 (600-1)	NA	NA

EC-2, 03 DEC 2020 to 31 DEC 2020

EC-2, 03 DEC 2020 to 31 DEC 2020