

WAAS CH <b>86806</b> <b>W27A</b>	APP CRS <b>272°</b>	Rwy Idg <b>6500</b> TDZE <b>770</b> Apt Elev <b>770</b>
--	------------------------	---

RNAV (GPS) RWY 27

PORTER COUNTY RGNL (VPZ)

▼

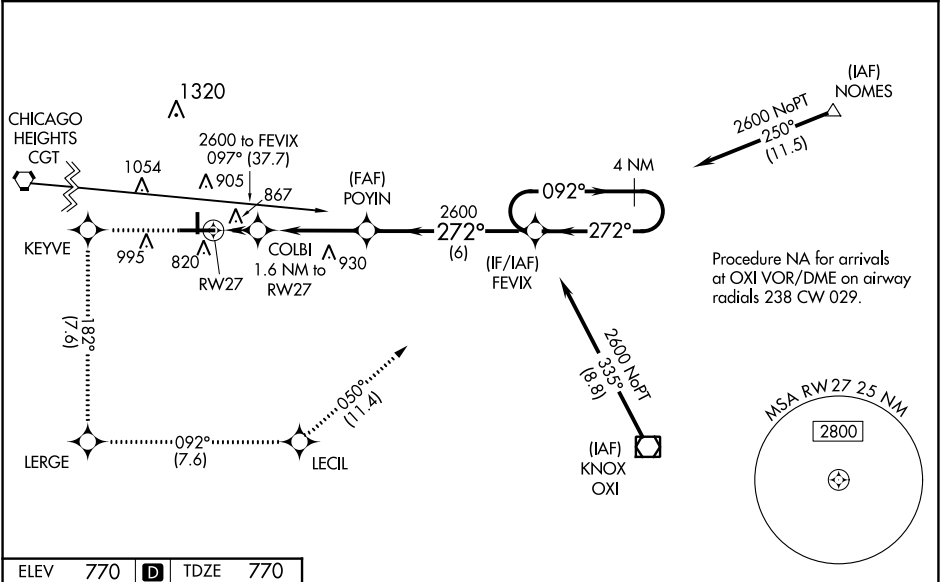
▲

Baro-VNAV NA when using Lansing Muni altimeter setting. For uncompensated Baro-VNAV systems, procedure NA below -16°C (4°F) or above 54°C (130°F). DME/DME RNP-0.3 NA. When local altimeter setting not received, use Lansing Muni altimeter setting and increase all DA 77 feet and all MDA 80 feet, and increase LPV and LNAV/VNAV all Cats, and Circling Cat C visibility ¼ mile. For inoperative MALSR, increase LNAV Cat D visibility to 1¼, when using Lansing Muni altimeter setting increase LPV all Cats visibility to 1¼.

MALSR

MISSED APPROACH:  
Climb to 2600 direct KEYVE and on track 182° to LERGE and on track 092° to LECIL and on track 050° to FEVIX and hold.

ASOS <b>125.875</b>	SOUTH BEND APP CON ★ <b>132.05 257.8</b>	CLNC DEL <b>120.525</b>	UNICOM <b>122.725 (CTAF) 0</b>
------------------------	---	----------------------------	-----------------------------------



ELEV 770 **D** TDZE 770

2600

KEYVE

tr 182°

LERGE

tr 092°

LECIL

tr 050°

FEVIX

VGSI and descent angles not coincident.

8 L

Δ 858

4001 X 753

7001 X 150

36

809

272° to RW27

RW27

Δ 1320

1.6 NM to RW27

POYIN 2600

FEVIX

4 NM Holding Pattern

092° → 2600

← 272°

GP 3.00°

TCH 50

1.6 NM

3.9 NM

6 NM

CATEGORY	A	B	C	D
LPV DA		1020-½	250 (300 -½)	
LNAV/ VNAV DA		1201-1	431 (500 -1)	
LNAV MDA	1180-½	410 (500 -½)	1180-¾ 410 (500-¾)	1180-1 410 (500-1)
CIRCLING	1260-1 490 (500-1)	1300-1 530 (600-1)	1300-1½ 530 (600-1½)	1360-2 590 (600-2)

HIRL Rwy 9-27 **0**

MIRL Rwy 18-36 **0**

REIL Rwy 9, 18 and 36 **0**

VALPARAISO, INDIANA

Orig-A 15OCT15

41°27'N-87°00'W

PORTER COUNTY RGNL (VPZ)

RNAV (GPS) RWY 27