

WAAS CH 53603 W19A	APP CRS 189°	Rwy Idg TDZE Apt Elev	5000 803 803
--	------------------------	-----------------------------	---

RNAV (GPS) RWY 19

SHELBYVILLE MUNI (GEZ)

RNP APCH:

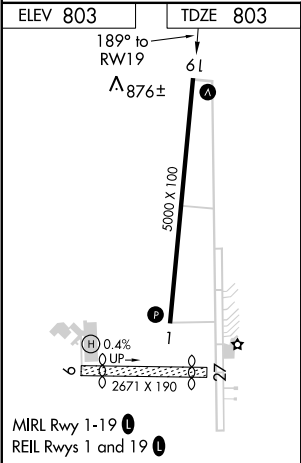
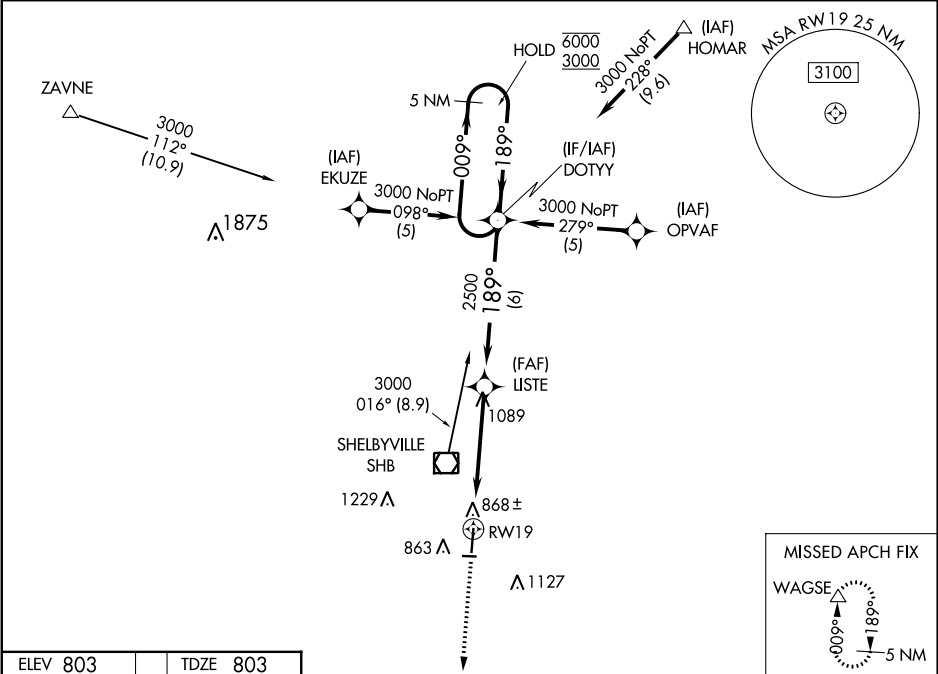
⚠

⚠

Circling Rwy 9, 27 NA at night. Baro-VNAV NA when using Indianapolis Intl altimeter setting. For uncompensated Baro-VNAV systems, LNAV/VNAV NA below -16°C or above 54°C. VDP NA when using Indianapolis Intl altimeter setting. When local altimeter setting not received, use Indianapolis Intl altimeter setting: increase LPV DA to 1152 feet and LNAV/VNAV DA to 1199 feet; increase all MDAs 60 feet and LNAV visibility Cats C and D ½ SM.

MISSED APPROACH:
Climb to 3000 direct
WAGSE and hold.

ASOS 121.55	INDIANAPOLIS APP CON 127.15 317.8	UNICOM 122.8 (CTAF) 1
-----------------------	---	---------------------------------



3000 ↑	WAGSE △	VGSI and RNAV glidepath not coincident (VGSI Angle 3.00/TCH 38).				5 NM Holding Pattern
*LNAV only.	*0.9 NM to RW19	LISTE 2500	189°	009°→	6000 3000	←189°
GP 3.00° TCH 45						
0.9		4.2 NM		6 NM		
CATEGORY	A	B	C	D		
LPV DA	1095-1 292 (300-1)					
LNAV/ VNAV DA	1142-1¼ 339 (400-1¼)					
LNAV MDA	1140-1 337 (400-1)					
CIRCLING	1200-1 397 (400-1)	1260-1 457 (500-1)	1320-1½ 517 (600-1½)	1480-2¼ 677 (700-2¼)		