

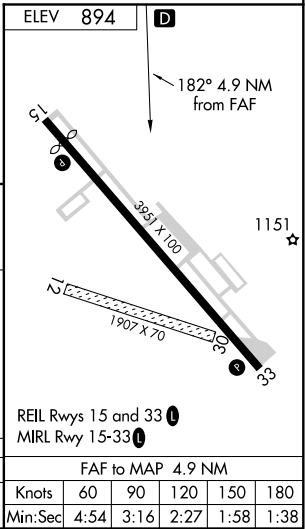
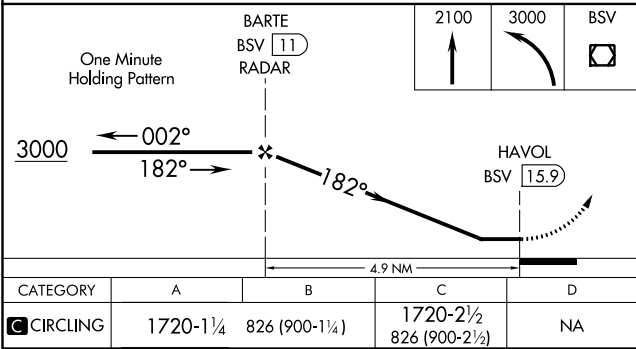
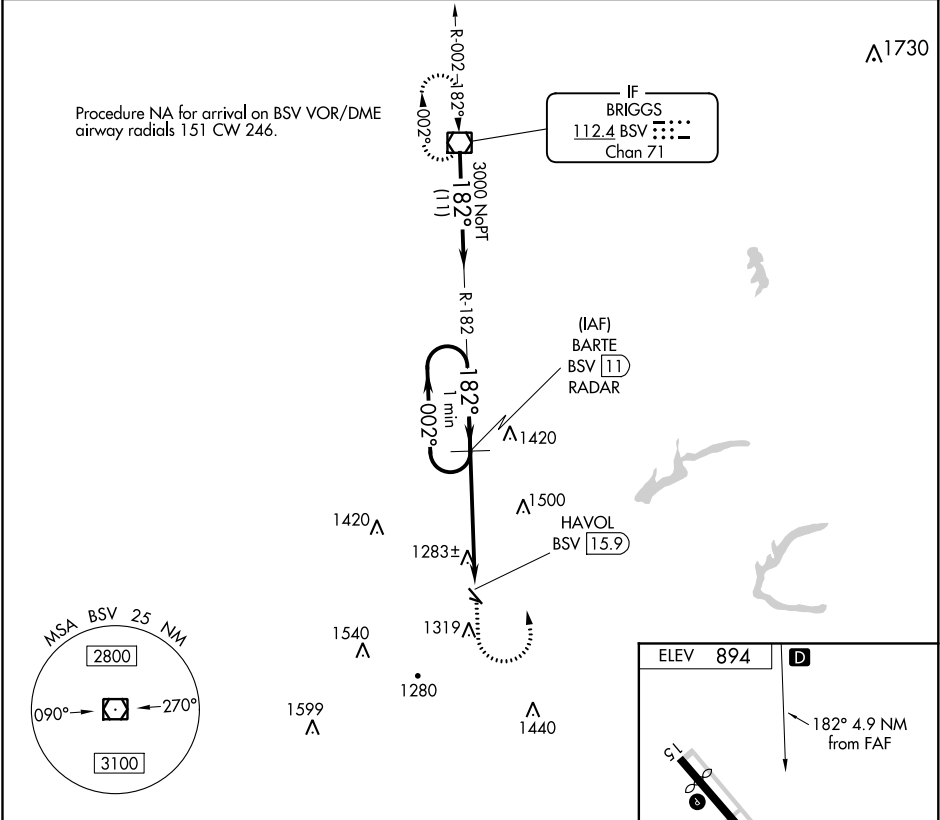
VOR/DME BSV	APP CRS	Rwy Idg	N/A
112.4	182°	TDZE	N/A
Chan 71		Apt Elev	894

VOR-A

HARRY CLEVER FIELD (PHD)

DME or RADAR required.		MISSED APPROACH: Climb to 2100 then climbing left turn to 3000 direct BSV VOR/DME and hold.
	Circling NA to Rwys 12 and 30. Rwy 15, 33 helicopter visibility reduction below 1 SM NA. Procedure NA at night.	

ASOS 121.425	CLEVELAND APP CON★ 125.5 371.875	UNICOM 122.8 (CTAF)	123.3 0
-----------------	-------------------------------------	------------------------	---------



VOR-A

EC-2, 03 DEC 2020 to 31 DEC 2020

EC-2, 03 DEC 2020 to 31 DEC 2020