

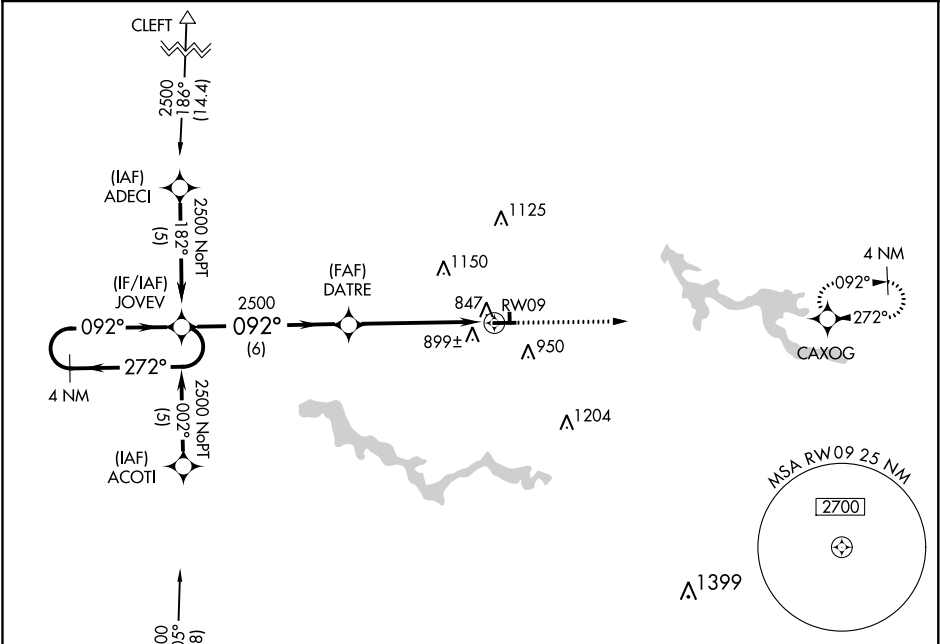
APP CRS 092°	Rwy Idg	4401
	TDZE	796
	Apt Elev	796

RNAV (GPS) RWY 9

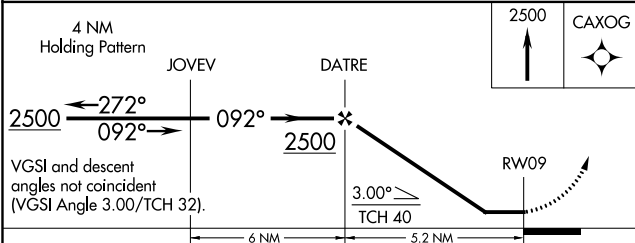
WABASH MUNI (IWH)

NA	DME/DME RNP-0.3 NA. Night landing: Rwy 18, 36 NA. Helicopter visibility reduction below 1 SM NA. Use Kokomo altimeter setting; when not received, use Marion altimeter setting.	MISSED APPROACH: Climb to 2500 direct CAXOG WP and hold.

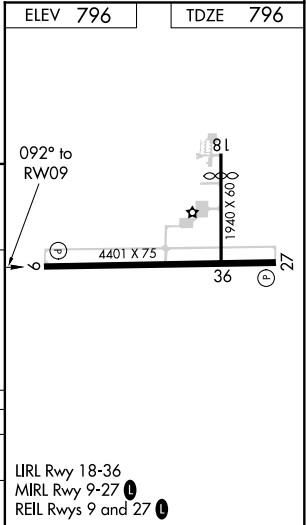
OKK AWOS-3PT 113.5	GRISSOM APP CON ★ 121.05 338.275	UNICOM 122.8 (CTAF) 0
-------------------------------------	---------------------------------------------------	----------------------------------------



Procedure NA for arrival at OKK VORTAC on V285 southbound, and arrival on V96 southwestbound.



CATEGORY	A	B	C	D
LNNAV MDA	1220-1	424 (500-1)	1220-1¼ 424 (500-1¼)	NA
CIRCLING	1300-1 504 (600-1)	1440-1 644 (700-1)	1560-2¼ 764 (800-2¼)	NA



EC-2, 03 DEC 2020 to 31 DEC 2020

EC-2, 03 DEC 2020 to 31 DEC 2020