

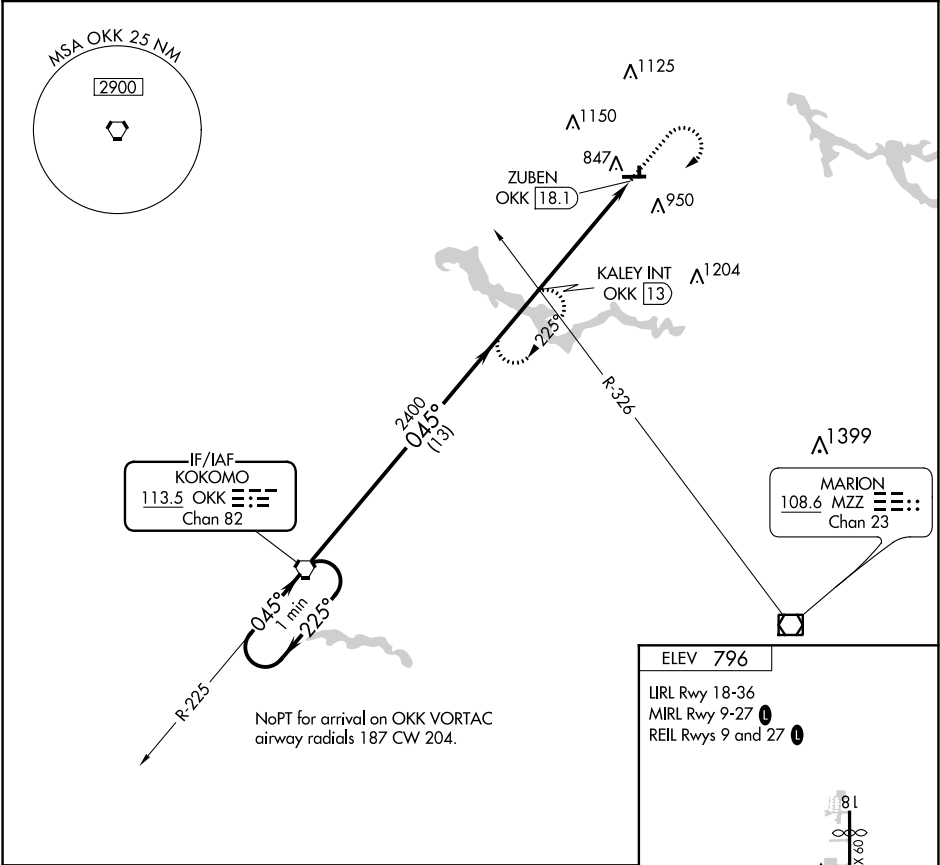
VORTAC OKK	APP CRS	Rwy Idg	N/A
113.5	045°	TDZE	N/A
Chan 82		Apt Elev	796


VOR-A

WABASH MUNI (IWH)

<p>▼ Night landing: Rwy 18, 36 NA. Rwy 18, 36 helicopter visibility reduction below 1 SM NA. Use Kokomo altimeter setting; when not received, use Marion altimeter setting.</p> <p>▲ NA</p>	<p>MISSED APPROACH: Climb to 2400 then right turn on OKK VORTAC R-045 to KALEY INT/OKK 13 DME and hold.</p>
---------------------------------------------------------------------------------------------------------------------------------------------------------------------------------------------	-------------------------------------------------------------------------------------------------------------

OKK AWOS-3PT 113.5	GRISSEM APP CON ★ 121.05 338.275	UNICOM 122.8 (CTAF) 0
-----------------------	-------------------------------------	--------------------------



<div><div>One Minute Holding Pattern</div><div><div><div>2400</div><div>← 225°</div><div>045° →</div><div>2400</div></div><div>OKK VORTAC</div><div>KALEY INT OKK (13)</div><div>ZUBEN OKK (18.1)</div><div>13 NM</div><div>5.1 NM</div></div></div> <div><div><div>2400</div><div>↑</div></div><div><div>OKK R-045</div><div></div></div><div><div>KALEY INT</div></div></div> <div><div><div><div><div>4401 X 75</div><div>36</div><div>27</div></div><div><div>1940</div><div>045° 5.1 NM from FAF</div></div></div></div></div>										
CATEGORY	A	B	C	D	FAF to MAP 5.1 NM					
CIRCLING	1320-1	1440-1	1560-2¼	NA	Knots	60	90	120	150	180
	524 (600-1)	644 (700-1)	764 (800-2¼)		Min:Sec	5:06	3:24	2:33	2:02	1:42

VOR-A