

WAAS CH 58013 W09A	APP CRS 088°	Rwy Idg 5100 TDZE 916 Apt Elev 926
--	------------------------	---

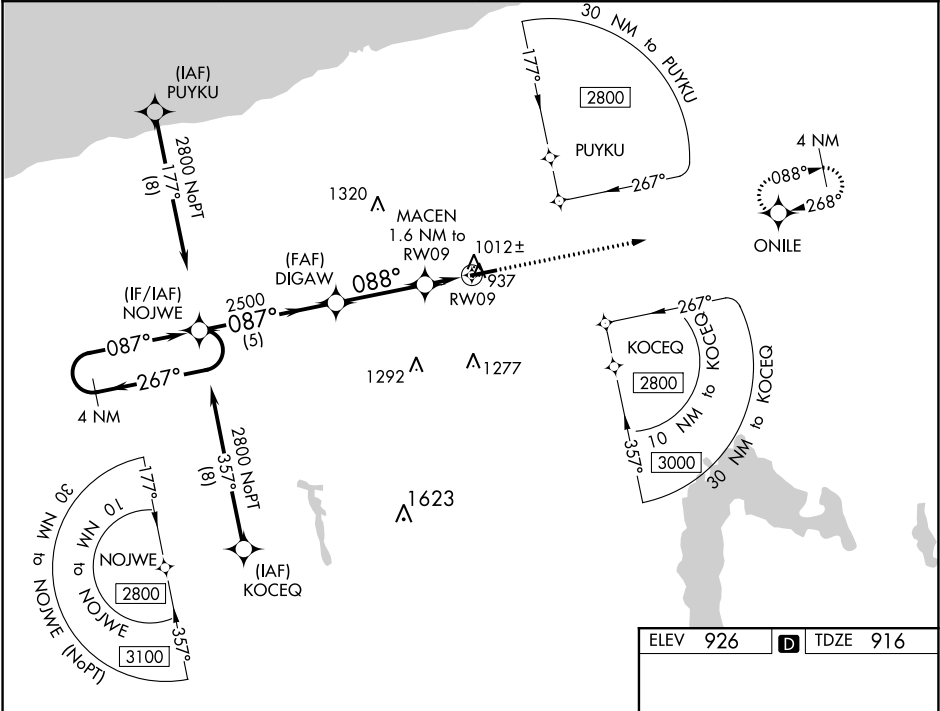
RNAV (GPS) RWY 9
NORTHEAST OHIO RGNL (HZY)

▼

For uncompensated Baro-VNAV systems, LNAV/VNAV NA below -21°C (-5°F) or above 54°C (130°F).
DME/DME RNP-0.3 NA.

MISSED APPROACH: Climb to 3000 direct ONILE and hold.

ASOS 118.325	BUFFALO APP CON★ 121.0	UNICOM 122.8 (CTAF)	123.3 0
------------------------	----------------------------------	-------------------------------	-----------------------



4 NM Holding Pattern

NOJWE

2800 ← 267° / 087° →

GP 3.00° TCH 45

DIGAW

2500

MACEN 1.6 NM to RW09

*1 NM to RW09

*1460

5 NM 3.3 NM 0.6 1 NM

CATEGORY	A	B	C	D
LPV DA		1166-7/8	250 (300-7/8)	
LNAV/VNAV DA		1182-7/8	266 (300-7/8)	
LNAV MDA		1280-1	364 (400-1)	
CIRCLING	1340-1 414 (500-1)	1380-1 454 (500-1)	1500-1½ 574 (600-1½)	1580-2 654 (700-2)

ELEV 926 **D** TDZE 916

ONILE

* LNAV only

088° to RW09

REIL Rwy 9 and 27 **0**
HIRL Rwy 9-27 **0**

EC-2, 03 DEC 2020 to 31 DEC 2020

EC-2, 03 DEC 2020 to 31 DEC 2020