

APP CRS 108°	Rwy Idg TDZE Apt Elev	5001 790 790
------------------------	-----------------------------	---

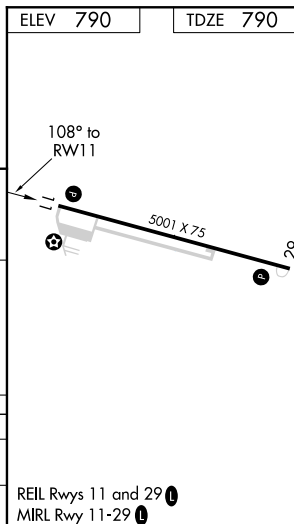
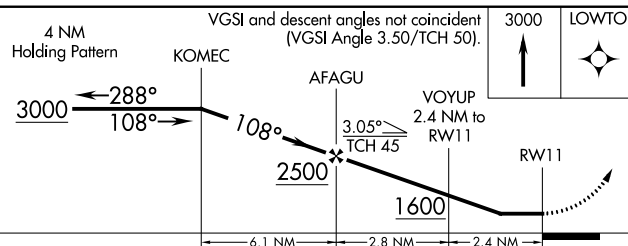
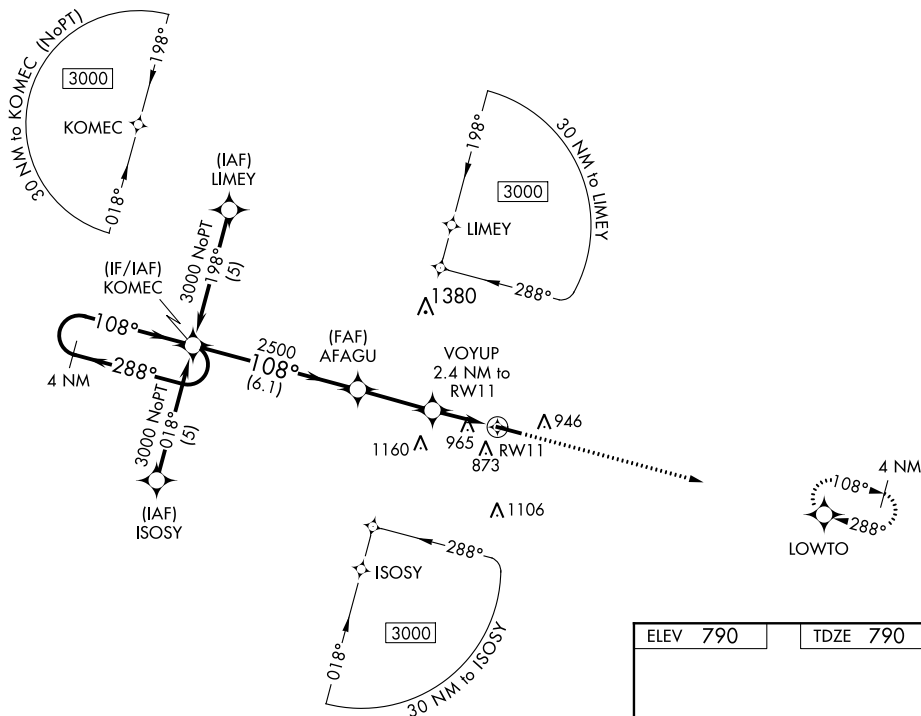
RNAV (GPS) RWY 11
FULTON COUNTY (RCR)

NA DME/DME RNP-0.3 NA. Visibility reduction by helicopters NA. When local altimeter setting not received, use Goshen altimeter setting and increase all MDA 100 feet, increase LNAV Cats C and D and Circling Cat C visibility ¼ mile.

MISSED APPROACH: Climb to 3000 direct LOWTO and hold.

AWOS-3
118.775

SOUTH BEND APP CON ★
132.05 257.8

UNICOM
122.7 (CTAF) **L**

CATEGORY	A	B	C	D
LNAV MDA	1220-1	430 (500-1)	1220-1¼ 430 (500-1¼)	1220-1½ 430 (500-1½)
CIRCLING	1280-1 490 (500-1)	1360-1 570 (600-1)	1360-1½ 570 (600-1½)	1360-2 570 (600-2)