

WAAS CH 48809 W29A	APP CRS 288°	Rwy Idg TDZE 790 Apt Elev 790	5001
----------------------------------------	------------------------	---------------------------------------------------	-------------

RNAV (GPS) RWY 29

FULTON COUNTY (R/C/R)

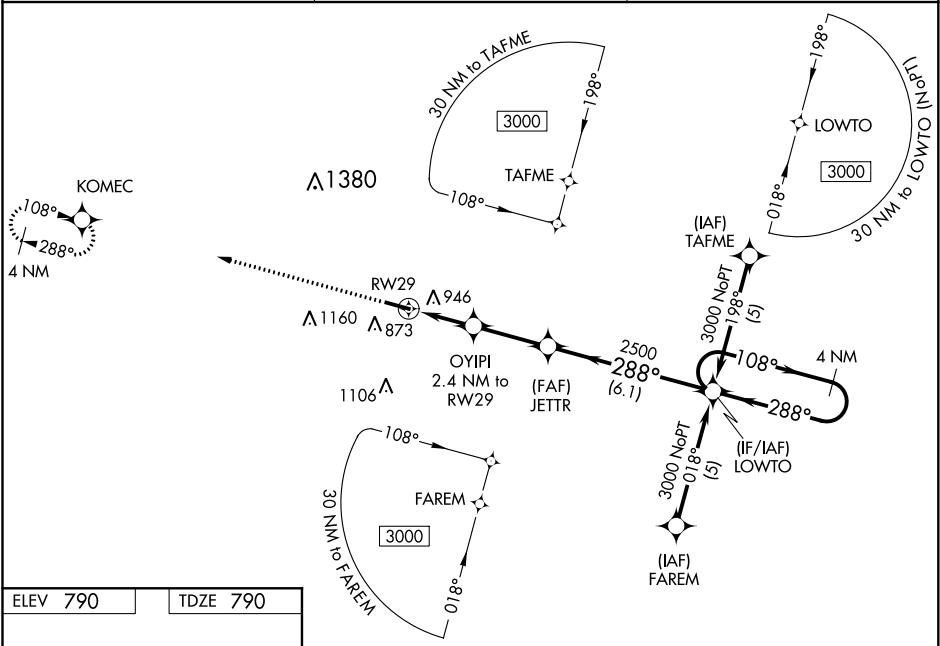
▼

▲ NA

DME/DME RNP-0.3 NA. Visibility reduction by helicopters NA.
For uncompensated Baro-VNAV systems, LNAV/VNAV NA below -16°C (4°F) or above 47° (116°F). When local altimeter setting not received, use Goshen altimeter setting and increase all DA 81 feet and all MDA 100 feet, increase LPV all Cats, LNAV Cats C and D, Circling Cat C visibility ¼ mile, LNAV/VNAV all Cats visibility ½ mile. Baro-VNAV and VDP NA when using Goshen altimeter setting.

MISSED APPROACH: Climb to 3000 direct KOMEC and hold.

AWOS-3 118.775	SOUTH BEND APP CON★ 132.05 257.8	UNICOM 122.7 (CTAF) 0
--------------------------	--------------------------------------------	---------------------------------



ELEV 790

TDZE 790

3000

KOMECH

VGSI and RNAV glidepath not coincident (VGSI Angle 3.38/TCH 30).

4 NM Holding Pattern

LOWTO

108°

288°

3000

GS 3.00° TCH 45

*LNAV only.

OYIPI 2.4 NM to RWY 29

JETTR

RWY 29

*0.9 NM to RWY 29

1600

2500

0.9 NM

1.5 NM

2.8 NM

6.1 NM

CATEGORY	A	B	C	D
LPV DA	1127-1¼		337 (400- 1¼)	
LNAV/VNAV DA	1244-1½		454 (500- 1½)	
LNAV MDA	1200-1	410 (500-1)	1200-1¼	410 (500-1¼)
CIRCLING	1280-1 490 (500-1)	1360-1 570 (600-1)	1360-1½ 570 (500-1½)	1360-2 570 (600-2)