

WAAS CH 73025 W27A	APP CRS 272°	Rwy Idg 4002 TDZE 925 Apt Elev 925
--	------------------------	---

RNAV (GPS) RWY 27

PORTLAND MUNI (PLD)

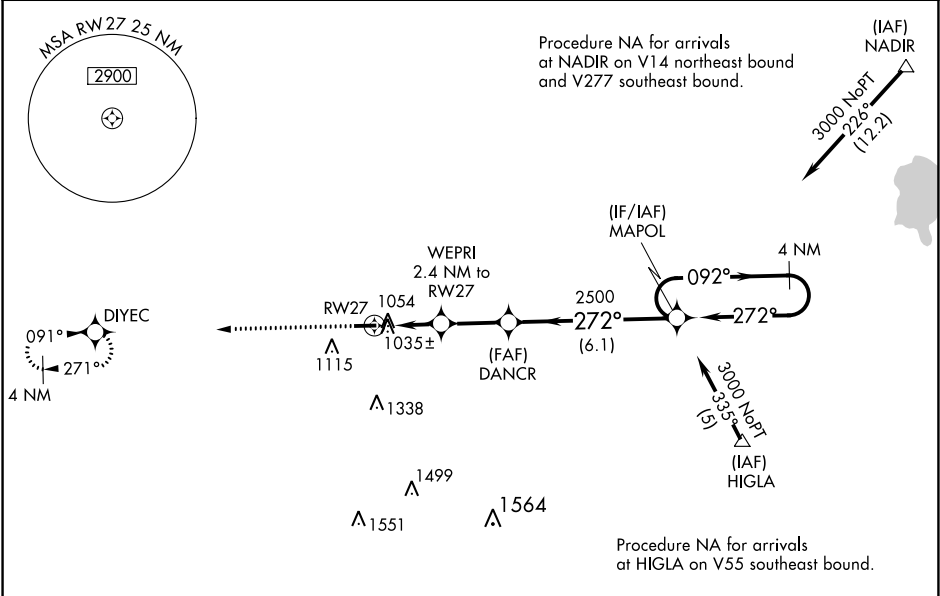
▼

NA

DME/DME RNP-0.3 NA. Helicopter visibility reduction below 1 SM NA. When local altimeter setting not received, use Fort Wayne Intl altimeter setting and increase all MDA 100 ft, LP Cat C visibility ¾ mile, LNAV and Circling Cat C visibility to ½ mile. When VGSI inop, Straight-in/Circling Rwy 27 procedure NA at night. When VGSI inop, Circling Rwy 9 NA at night.

MISSED APPROACH:
Climb to 2500 direct
DIYEC and hold.

AWOS-3 124.675	FORT WAYNE APP CON 132.15 (SE/NE) 284.6 127.2 (SW/NW) 284.6	UNICOM 122.8 (CTAF) 0
--------------------------	---	--



ELEV 925	TDZE 925
-----------------	-----------------

