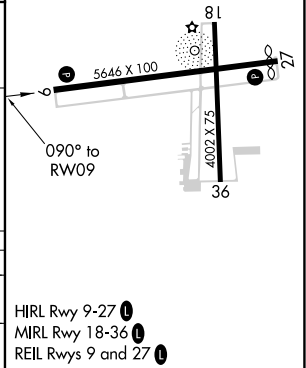
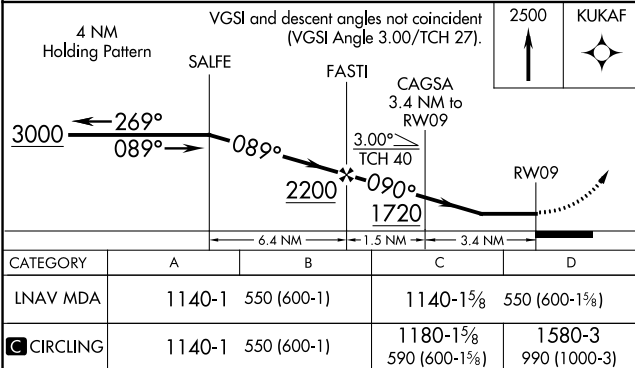
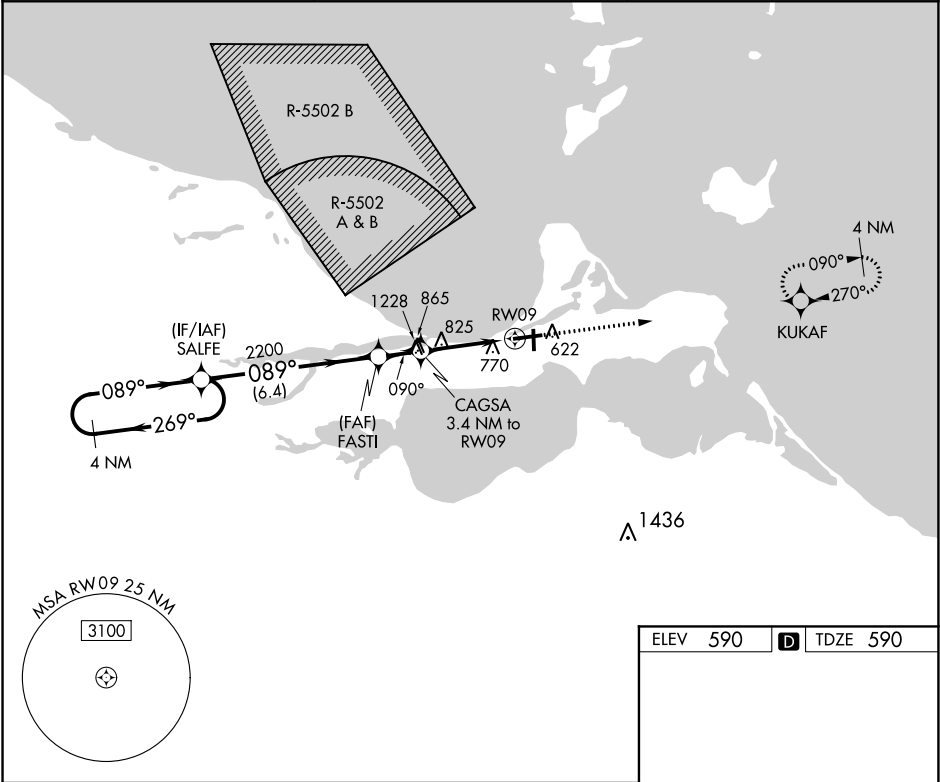


APP CRS	Rwy Idg	5161
090°	TDZE	590
	Apt Elev	590

RNAV (GPS) RWY 9  
ERIE-OTTAWA INTL (PCW)

RNP APCH.	When local altimeter setting not received, use Toledo Executive altimeter setting and increase all MDA 80 feet and all Cat C/D visibilities ¼ mile. Rwy 9 helicopter visibility reduction below ¾ SM NA. Circling Rwy 18, 36 NA at night.	MISSED APPROACH: Climb to 2500 direct KUKAF and hold.
-----------	---	--

AWOS-3 118.775	CLEVELAND APP CON 126.35 346.325	UNICOM 122.8 (CTAF) 0
-------------------	-------------------------------------	--------------------------



PORT CLINTON, OHIO Amdt 1B 30JAN20	41°31'N-82°52'W	ERIE-OTTAWA INTL (PCW) RNAV (GPS) RWY 9
---------------------------------------	-----------------	--

EC-2, 03 DEC 2020 to 31 DEC 2020

EC-2, 03 DEC 2020 to 31 DEC 2020