

(MAREO5.MAREO) 20086  
MAREO FIVE DEPARTURE

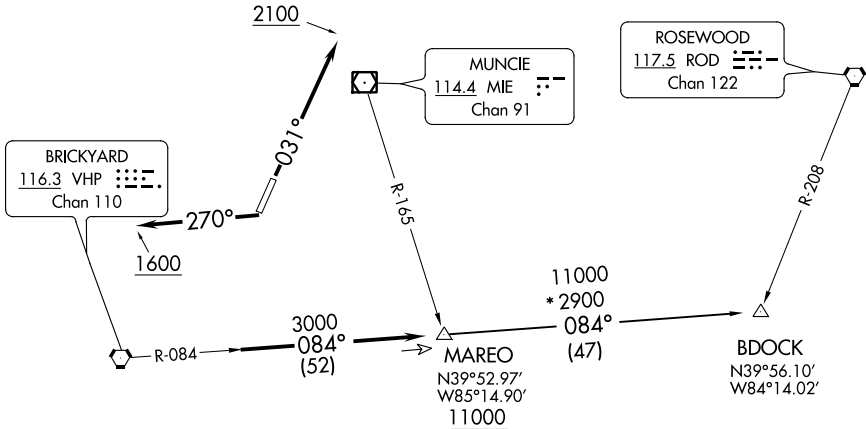
AL-5733 (FAA)

EAGLE CREEK AIRPARK (EYE)  
INDIANAPOLIS, INDIANA

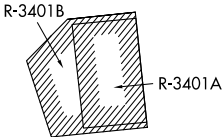
ASOS  
121.575  
CLNC DEL  
128.6  
INDIANAPOLIS DEP CON  
119.05 317.8

TAKEOFF MINIMUMS  
Rwys 3, 21: Standard.

TOP ALTITUDE:  
ASSIGNED BY ATC



- NOTE: RADAR required.  
NOTE: Select appropriate localizer/DME frequency/channel prior to departure.  
NOTE: Turbojets accelerate to 250K until reaching 10000, if unable advise ATC.  
NOTE: Assigned to aircraft with a requested altitude of 11000 or above.



NOTE: Chart not to scale.



DEPARTURE ROUTE DESCRIPTION

TAKEOFF RWY 3: Climb heading 031° to 2100, then on assigned heading to assigned altitude. Thence....  
TAKEOFF RWY 21: Climb heading 270° to 1600, then on assigned heading to assigned altitude. Thence....  
....expect RADAR vectors to join VHP R-084 to MAREO INT then via transition or assigned route. Expect clearance to requested altitude ten minutes after departure.

BDOCK TRANSITION (MAREO5.BDOCK): From over MAREO INT via VHP R-084 to BDOCK INT.