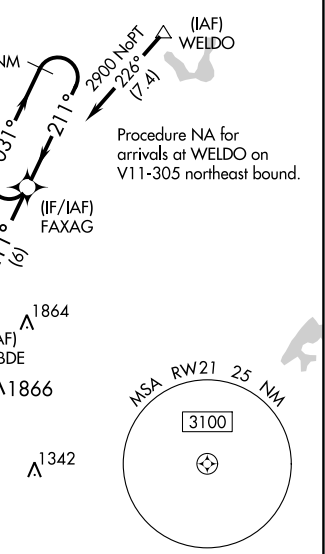


RNAV (GPS) RWY 21

MALS

MISSED APPROACH:
Climbing right turn to 2900
direct ANTI and hold.

UNICOM
122.8 (CTAF) **L**

ELEV 823

TDZE 823

211° to RW21

21

21

21

4200 x 75

3

☆

MRL Rwy 3-21

REIL Rwy 3

DEC-2 03 DEC 2020 to 31 DEC 2020