

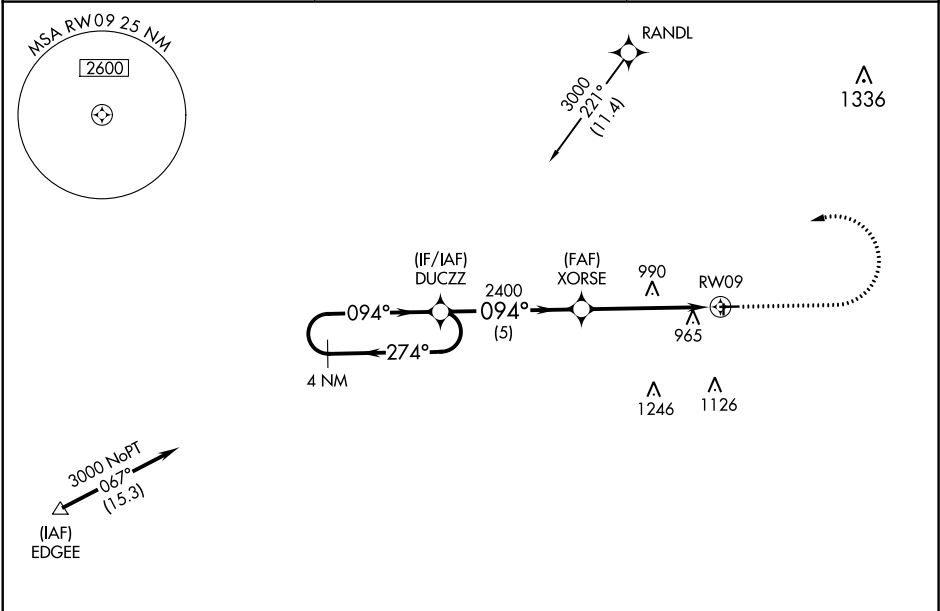
WAAS CH 93828 W09A	APP CRS 094°	Rwy Idg TDZE 779 Apt Elev 781
--	------------------------	---

RNAV (GPS) RWY 9

FULTON COUNTY (USE)

RNP APCH. ▼ For uncompensated Baro-VNAV systems, procedure NA below -16°C or above 54°C. Circling Rwy 18, 36 NA at night. Rwy 9 helicopter visibility reduction below 1 SM NA. Straight-in Rwy 9 and Circling Rwy 9, 27 at night, operational VGSI required, remain on or above VGSI glidepath until threshold.	MISSED APPROACH: Climb to 2100 then climbing left turn to 3000 direct DUCZZ and hold.
--	--

AWOS-3P 127.375	TOLEDO APP CON 134.35 317.55	UNICOM 123.0 (CTAF) 0
---------------------------	--	---------------------------------



					ELEV 781		TDZE 779	
4 NM Holding Pattern					VGSI and RNAV glidepath not coincident (VGSI Angle 3.00/TCH 24).		2100 3000 DUCZZ	
DUCZZ					XORSE			
3000 ← 274° 094° →					2400		RW09	
GP 3.00° TCH 40					2400			
5 NM					5 NM			
CATEGORY	A	B	C	D				
LPV DA	1108-1½ 329 (400-1½)							
LNAV/VNAV DA	1198-1¾ 419 (500-1¾)							
LNAV MDA	1300-1	521 (600-1)	1300-1½	521 (600-1½)				
CIRCLING	1320-1	539 (600-1)	1320-1½ 539 (600-1½)	1340-2 559 (600-2)				
					REIL Rwy 9 and 27 0			
					MIRL Rwy 9-27 0			

094° to RW09	
81	3882 X 75
2115 X 75	27
36	