

APP CRS  
267°

Rwy Idg  
TDZE  
Apt Elev

4400  
893  
894

RNAV (GPS) RWY 26  
LAKEFIELD (CQA)

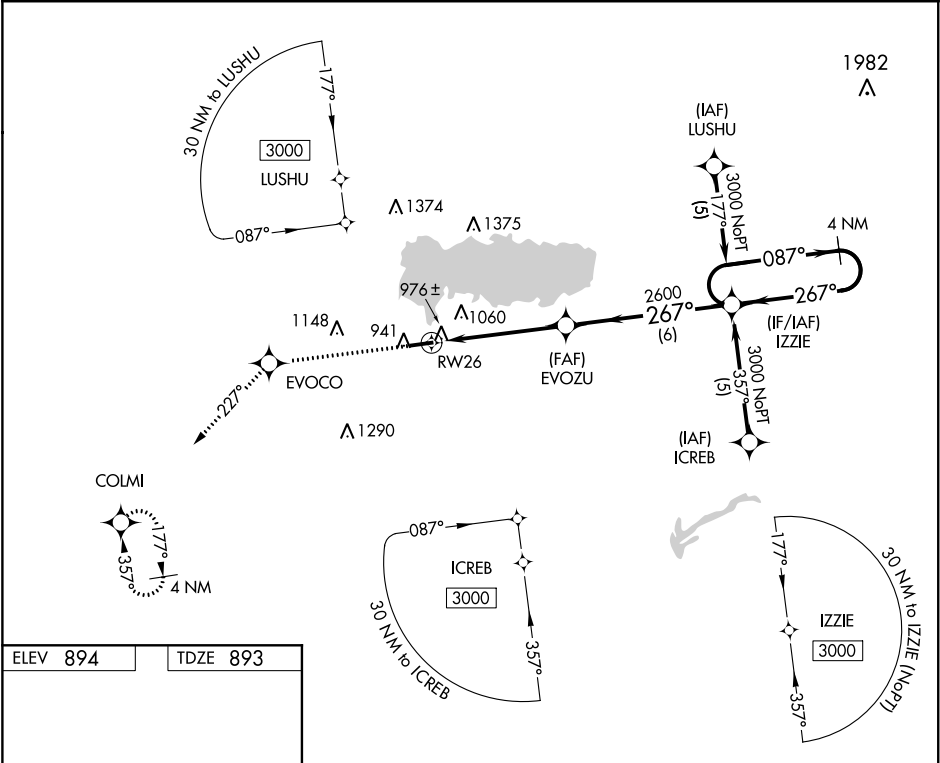
▼

NA

DME/DME RNP-0.3 NA. Visibility reduction by helicopters NA. Baro-VNAV NA. Use Wapakoneta altimeter setting. When not received, use James M. Cox Dayton Intl altimeter setting and increase all DA 73 feet and all MDA 80 feet and increase LNAV/VNAV Cats A/B/C and LNAV Cat C visibility ¼ mile.

MISSED APPROACH: Climb to 3000 direct EVOCO and via track 227° to COLMI and hold.

AXV AWOS-3 128.325	COLUMBUS APP CON 118.425 352.05	UNICOM 122.8 (CTAF)	123.3 0
-----------------------	------------------------------------	------------------------	---------



ELEV 894

TDZE 893

3000

EVOCO

tr 227°

COLMI

267° to RW26

4400 X 75

VGSI and RNAV glidepath not coincident (VGSI Angle 3.00/TCH 29).

4 NM Holding Pattern

3000

2600

2600

087°

267°

3000

GP 3.20° TCH 40

4.9 NM

6 NM

CATEGORY	A	B	C	D
LNAV/VNAV DA	1277-1¼	384 (400-1¼)		NA
LNAV MDA	1260-1	367 (400-1)		NA
CIRCLING	1320-1 426 (500-1)	1360-1 466 (500-1)	1360-1½ 466 (500-1½)	NA