

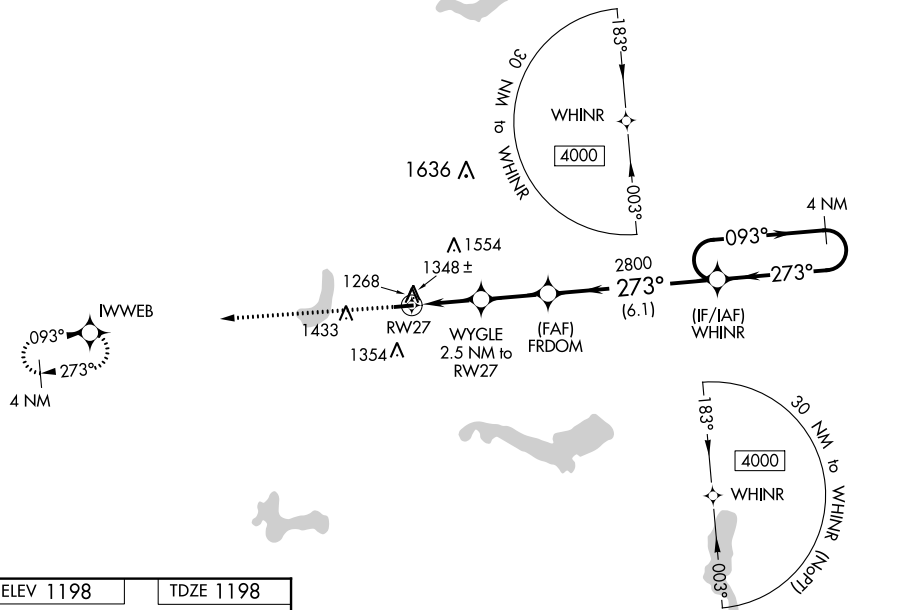
|  |                        |   |
|--|------------------------|---|
| WAAS<br>CH <b>49035</b><br><b>W27A</b> | APP CRS<br><b>273°</b> | Rwy Idg <b>3499</b><br>TDZE <b>1198</b><br>Apt Elev <b>1198</b> |
|--|------------------------|---|

# RNAV (GPS) RWY 27

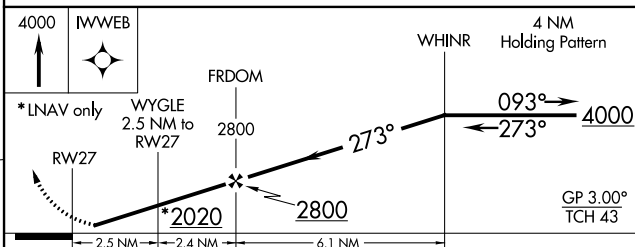
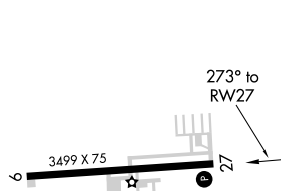
**▼** Baro-VNAV NA when using Akron-Canton Rgnl altimeter setting. For uncompensated Baro-VNAV systems, LNAV/VNAV NA below -17°C (2°F) or above 54°C (130°F). DME/DME RNP-0.3 NA. **▲** When local altimeter setting not received, use Akron-Canton Rgnl altimeter setting and increase all DA 50 feet and all MDA 60 feet; increase LPV all Cats visibility  $\frac{1}{8}$  mile, LNAV/VNAV all Cats visibility  $\frac{1}{4}$  mile and Circling Cat C visibility  $\frac{1}{4}$  mile. Helicopter visibility reduction below 1 SM NA. Night landing Cat C: Procedure NA.


**MISSED APPROACH:**  
Climb to 4000 direct  
JWWEB and hold.

|                          |  |                           |   |
|--------------------------|--|---------------------------|---|
| AWOS-3<br><b>118.675</b> | CLEVELAND APP CON★<br><b>118.6 371.875</b> | CLNC DEL<br><b>125.65</b> | UNICOM<br><b>123.05</b> (CTAF) <b>U</b> |
|--------------------------|--|---------------------------|---|



|           |  |           |
|-----------|--|-----------|
| ELEV 1198 |  | TDZE 1198 |
|-----------|--|-----------|



| CATEGORY   |     | A                          | B                     | C                             | D  |
|--|-----|----------------------------|-----------------------|-------------------------------|----|
| LPV  | DA  | 1471-1 273 (300-1)         |                       |                               | NA |
| RNAV/<br>VNAV  | DA  | 1546-1 1/8 348 (400-1 1/8) |                       |                               | NA |
| RNAV   | MDA | 1640-1 442 (500-1)         |                       | 1640-1 3/8<br>442 (500-1 3/8) | NA |
|  CIRCLING |     | 1740-1<br>542 (600-1)      | 1800-1<br>602 (700-1) | 1920-2<br>722 (800-2)         | NA |