

WAAS CH <b>81916</b> <b>W07A</b>	APP CRS <b>067°</b>	Rwy ldg <b>4700</b> TDZE <b>765</b> Apt Elev <b>766</b>
--	------------------------	---

RNAV (GPS) RWY 7

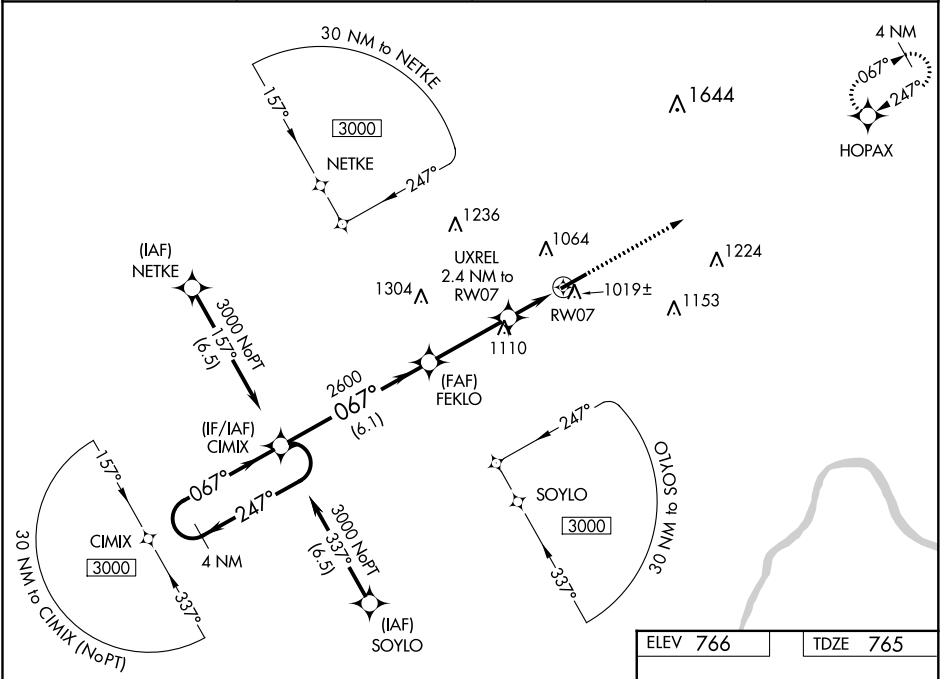
OHIO UNIVERSITY (UNI)

⚠

For uncompensated Baro-VNAV systems, LNAV/VNAV NA below -16°C (4°F) or above 54°C (130°F). DME/DME RNP-0.3 NA.  
Rwy 7 helicopter visibility reduction below ¾ SM NA.

MISSED APPROACH:  
Climb to 3000 direct HOPAX and hold.

AWOS-3 <b>128.325</b>	HUNTINGTON APP CON <b>120.95 270.1</b>	CLNC DEL <b>120.95</b>	UNICOM <b>123.075 (CTAF) 0</b>
--------------------------	---	---------------------------	-----------------------------------



ELEV 766	TDZE 765
----------	----------

4 NM Holding Pattern		VGSi and RNAV glidepath not coincident (VGSi Angle 3.00/TCH 25).		3000	HOPAX
3000		CIMIX		FEKLO	
GP 3.00° TCH 40		2600		UXREL 2.4 NM to RW07	
067°		067°		*1.5 NM to RW07	
247°		2600		RW07	
6.1 NM		3.2 NM		0.9 NM	
CATEGORY		A		B	
LPV DA		1184-1½		419 (500-1½)	
LNAV/VNAV DA		1202-1½		437 (500-1½)	
LNAV MDA		1280-1		515 (600-1)	
CIRCLING		1380-1		614 (700-1)	
		1420-1¾		654 (700-1¾)	
		1480-2¼		714 (800-2¼)	

