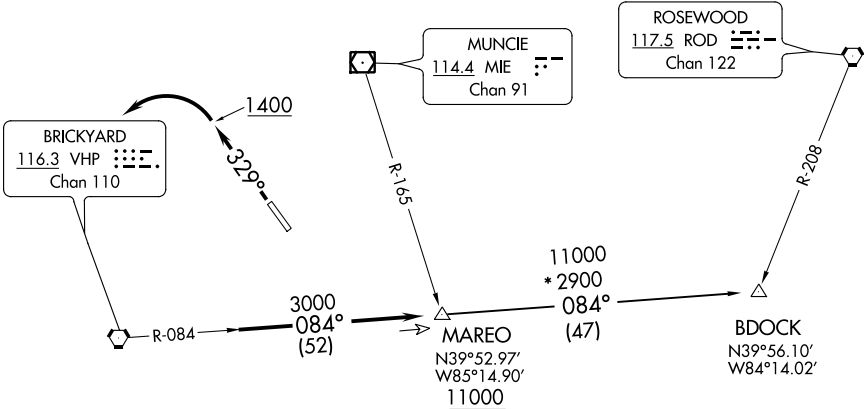


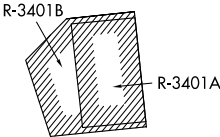
AWOS-3
119.375
CLNC DEL
121.625
INDIANAPOLIS DEP CON
127.15 317.8

TAKEOFF MINIMUMS
Rwy 15: NA-obstacles.
Rwy 33: Standard.

TOP ALTITUDE:
ASSIGNED BY ATC



- NOTE: RADAR required.
NOTE: Select appropriate localizer/DME frequency/channel prior to departure.
NOTE: Turbojets accelerate to 250K until reaching 10000, if unable advise ATC.
NOTE: Assigned to aircraft with a requested altitude of 11000 or above.



NOTE: Chart not to scale.



DEPARTURE ROUTE DESCRIPTION

TAKEOFF RWY 33: Climb heading 329° to 1400 before turning left. Then on assigned heading to assigned altitude. Thence....

DEPARTING ALL OTHER AUTHORIZED RUNWAYS: Climb on assigned heading to assigned altitude. Thence....

....expect RADAR vectors to join VHP R-084 to MAREO INT then via transition or assigned route. Expect clearance to requested altitude ten minutes after departure.

BDOCK TRANSITION (MAREO5.BDOCK): From over MAREO INT via VHP R-084 to BDOCK INT.