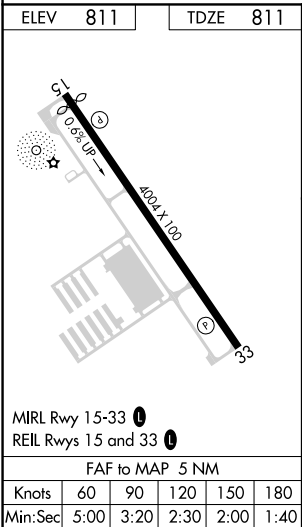
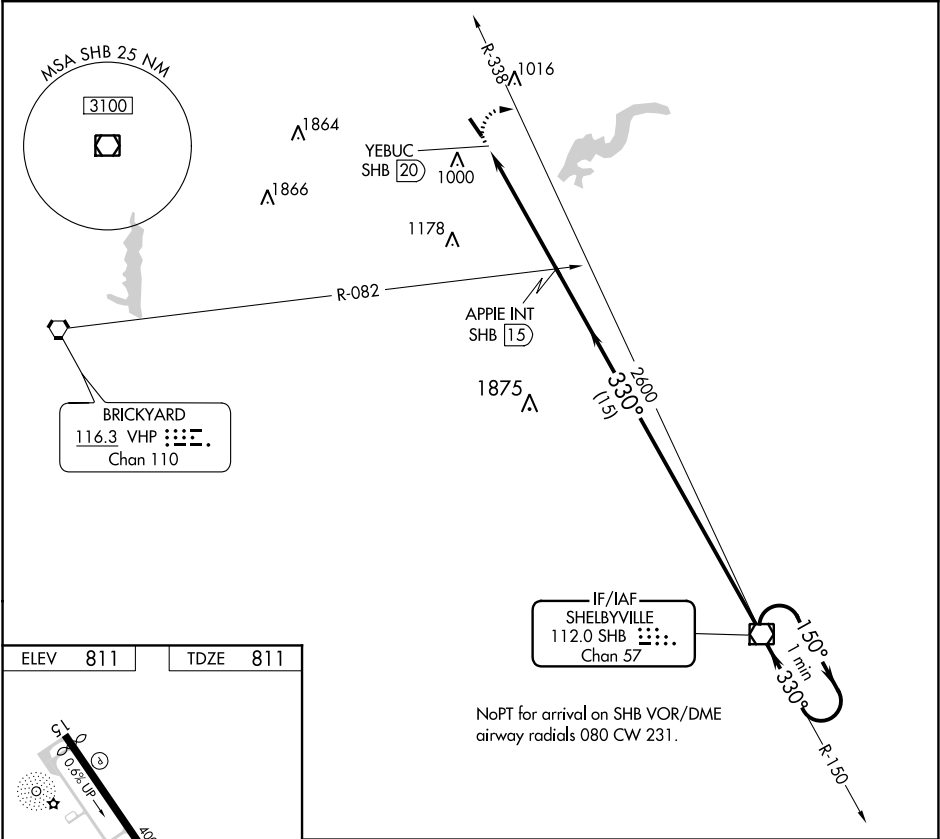


VOR/DME SHB	APP CRS	Rwy Idg	4004
112.0	330°	TDZE	811
Chan 57		Apf Elev	811

When local altimeter setting not received, use Indianapolis Intl altimeter setting and increase all MDA 60 feet, increase S-33 and Circling Cat C visibility to 1¾. Rwy 33 helicopter visibility reduction below ¾ SM NA.

MISSED APPROACH: Climbing right turn to 2600 on SHB VOR/DME R-338 direct SHB VOR/DME and hold.

AWOS-3 119.375	INDIANAPOLIS APP CON 127.15 317.8	CLNC DEL 121.625	UNICOM 123.0 (CTAF) 1
-------------------	--------------------------------------	---------------------	--------------------------



2600	SHB	APPIE INT SHB 15	SHB VOR/DME	One Minute Holding Pattern
SHB R-338		YEBUC SHB 20	330°	150° → 2600 ← 330°
		3.00° TCH 40		VGSI and descent angles not coincident (VGSI Angle 3.50/TCH 27).
	0.5	5 NM	1.5 NM	
CATEGORY	A	B	C	D
S-33	1340-1	529 (600-1)	1340-1½ 529 (600-1½)	NA
CIRCLING	1340-1	529 (600-1)	1340-1½ 529 (600-1½)	NA