

APP CRS	Rwy Idg	3999
235°	TDZE	566
	Apt Elev	566

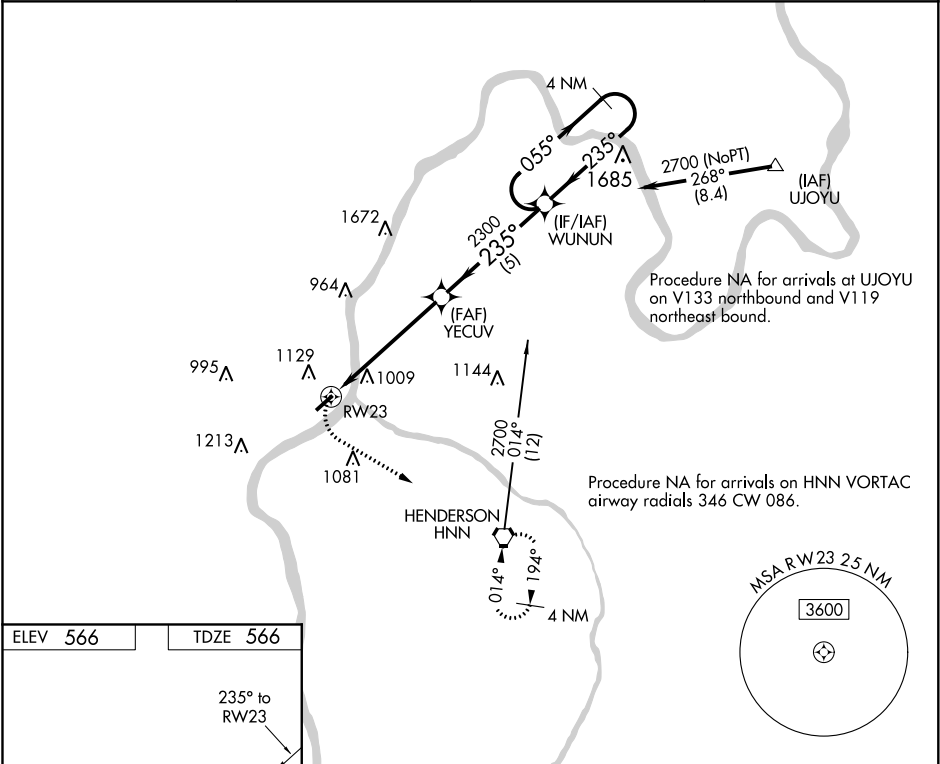
RNAV (GPS) RWY 23

GALLIA-MEIGS RGNL (GAS)

DME/DME RNP-0.3 NA. Procedure NA at night. Helicopter visibility reduction below 1 SM NA. When local altimeter setting not received, use Point Pleasant altimeter setting and increase all MDA 40 feet, and increase Circling Cat C visibility ¼ mile.

MISSED APPROACH:  
Climbing left turn to 2700  
direct HNN VORTAC and hold.

AWOS-3 119.925	HUNTINGTON APP CON 128.4 270.1	CLNC DEL 124.55	UNICOM 123.0 (CTAF) 1
-------------------	-----------------------------------	--------------------	--------------------------



MIRL Rwy 5-23 **L**  
REIL Rwy 23 **L**

2700	HNN	VGSI and descent angles not coincident (VGSI Angle 3.00/TCH 40).		4 NM Holding Pattern	
		YECUV	WUNUN		
		2300	235°	055° → 2700	← 235°
		3.00° TCH 40	235°		
		5.3 NM	5 NM		
CATEGORY	A	B	C	D	
LNAV MDA	1360-1 794 (800-1)	1360-1¼ 794 (800-1¼)	1360-2½ 794 (800-2½)	NA	
CIRCLING	1440-1¼ 874 (900-1¼)	1440-2½ 874 (900-2½)		NA	

EC-2, 03 DEC 2020 to 31 DEC 2020

EC-2, 03 DEC 2020 to 31 DEC 2020