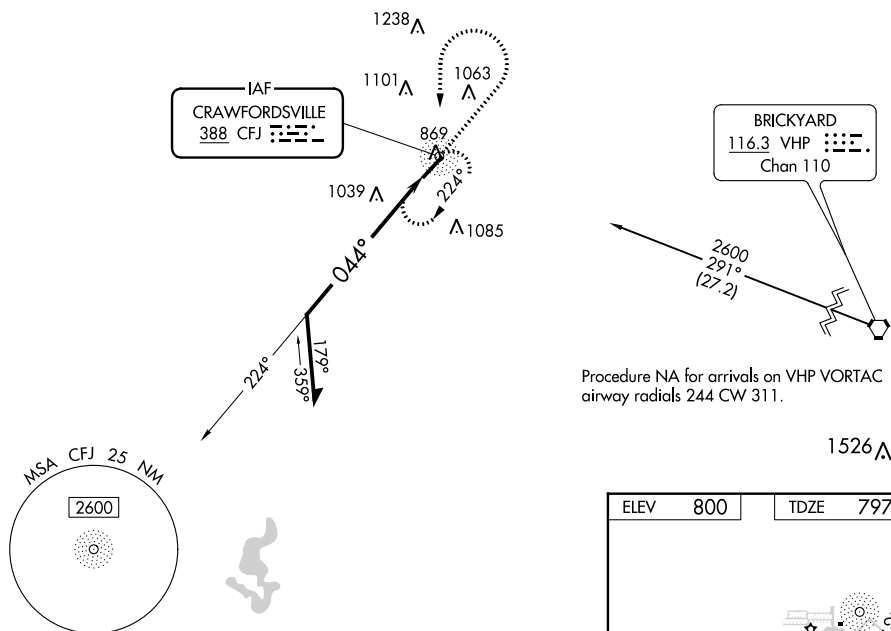


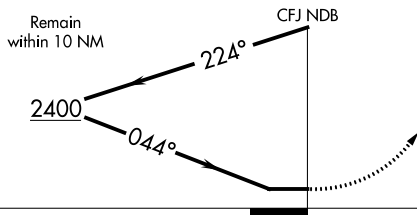
NDB RWY 4
CRAWFORDSVILLE RGNL (CFJ)


MISSED APPROACH: Climb to 2400 then left turn direct CFJ NDB and hold.

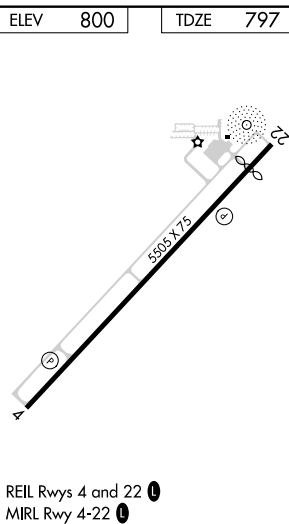
UNICOM
122.8 (CTAF) **L**



Procedure NA for arrivals on VHP VORTAC
airway radials 244 CW 311.

1526 Δ 

2400		CFJ
------	---	-----



REIL Rwy 4 and 22 **L**
MIRL Rwy 4-22 **L**