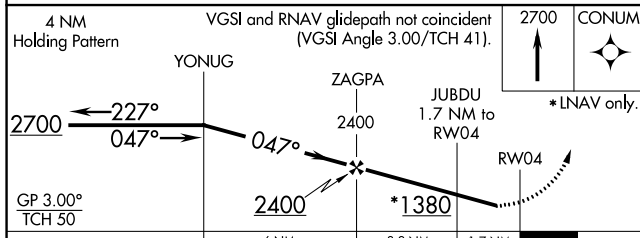
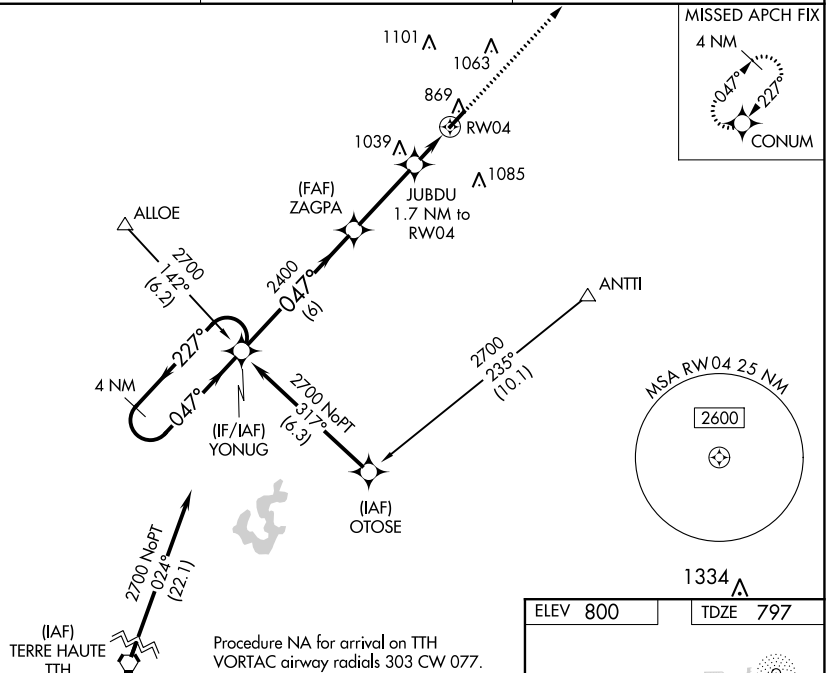



RNAV (GPS) RWY 4
CRAWFORDSVILLE RGNL (CFJ)

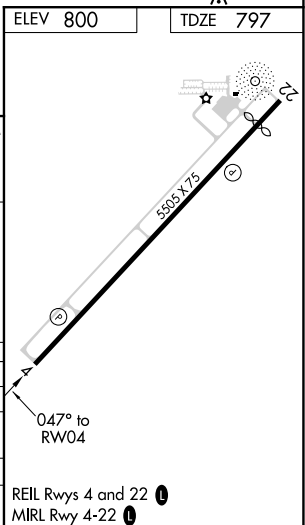
Baro-VNAV NA when using Greencastle altimeter setting. For uncompensated Baro-VNAV systems, LNAV/VNAV NA below -16°C or above 54°C. When local altimeter setting not received, use Greencastle altimeter setting: increase LPV DA to 1128 feet and all visibilities ¼ SM, LNAV/VNAV DA to 1118 feet and all visibilities ¼ SM; increase all MDA 60 feet and Circling Cats C and D visibilities ¼ SM. Rwy 4 helicopter visibility reduction below ¾ SM NA.

MISSED APPROACH:
Climb to 2700 direct
CONUM and hold.

UNICOM
122.8 (CTAF) **L**



CATEGORY		A		B		C		D	
LPV	DA			1076-7 ₈		279 (300-7 ₈)			
LNNAV/ VNAV	DA			1066-7 ₈		269 (300-7 ₈)			
LNNAV	MDA	1240-1		443 (500-1)		1240-1 ₃ ⁸		443 (500-1 ₃ ⁸)	
 CIRCLING		1240-1 440 (500-1)		1260-1 460 (500-1)		1440-1 ₃ ⁴ 640 (700-1 ₃ ⁴)		1520-2 ₁ ⁴ 720 (800-2 ₁ ⁴)	



EC-2, 03 DEC 2020 to 31 DEC 2020