

WAAS  
CH **70541**  
**W28A**

APP CRS  
**276°**

Rwy Idg  
TDZE  
Apt Elev

**4201**  
**1090**  
**1090**

**RNAV (GPS) RWY 28**

NEW CASTLE HENRY COUNTY MARLATT FIELD (UWL)

RNP APCH.

▼

NA

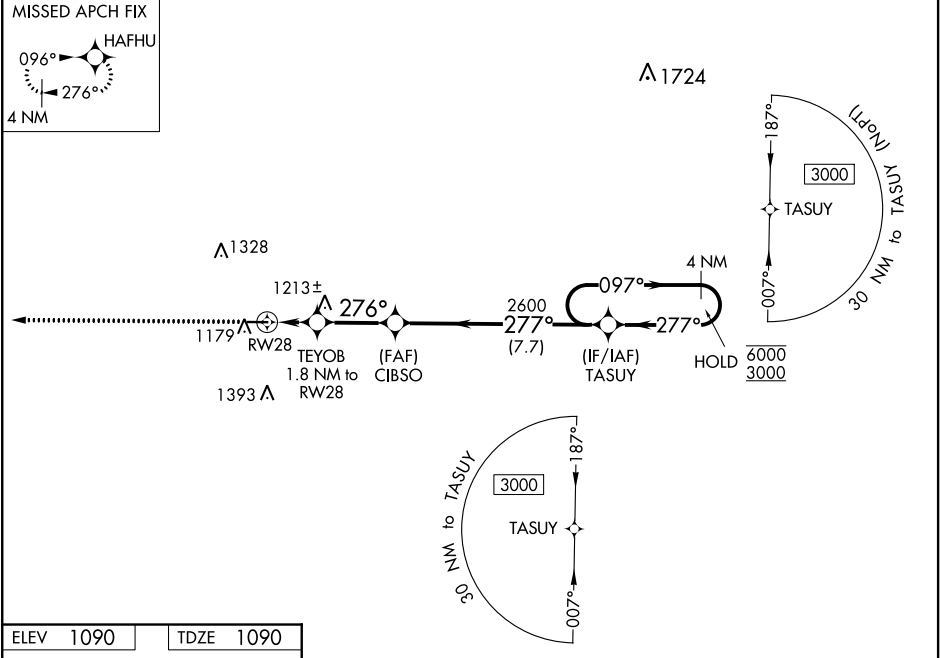
Rwy 28 helicopter visibility reduction below ¾ SM NA. Baro-VNAV NA.  
Use Anderson altimeter setting; when not received, use Muncie altimeter setting and increase LPV DA to 1416, LNAV/VNAV DA to 1441, and all MDA 20 feet.

MISSED APPROACH:  
Climb to 3000 direct HAFHU and hold.

AID AWOS-3  
**128.55**

INDIANAPOLIS APP CON  
**135.45 317.8**

UNICOM  
**123.05 (CTAF) 0**



ELEV	1090	TDZE	1090
------	------	------	------

