

WAAS CH <b>72907</b> <b>W26A</b>	APP CRS <b>261°</b>	Rwy Idg <b>5263</b> TDZE <b>910</b> Apt Elev <b>913</b>
--	------------------------	---

## RNAV (GPS) RWY 26

NEIL ARMSTRONG (AXV)

RNP APCH.

**V**  
**A** NA Baro-VNAV NA when using Lima altimeter setting. For uncompensated Baro-VNAV systems, LNAV/VNAV NA below -16°C (4°F) or above 54°C (130°F). Rwy 26 helicopter visibility reduction below 1 SM NA. When local altimeter setting not received, use Lima altimeter setting and increase LPV DA to 1291, LNAV/VNAV DA to 1324, and all MDA 60 feet, increase LNAV/VNAV visibility all Cats ¼ mile. VDP NA when using Lima altimeter setting.

**MISSED APPROACH:**  
Climb to 3000 direct  
ZUKEC and hold.

AWOS-3 <b>128.325</b>	COLUMBUS APP CON <b>118.425 294.5</b>	UNICOM <b>122.8</b> (CTAF)	<b>122.7</b>
--------------------------	--	-------------------------------	--

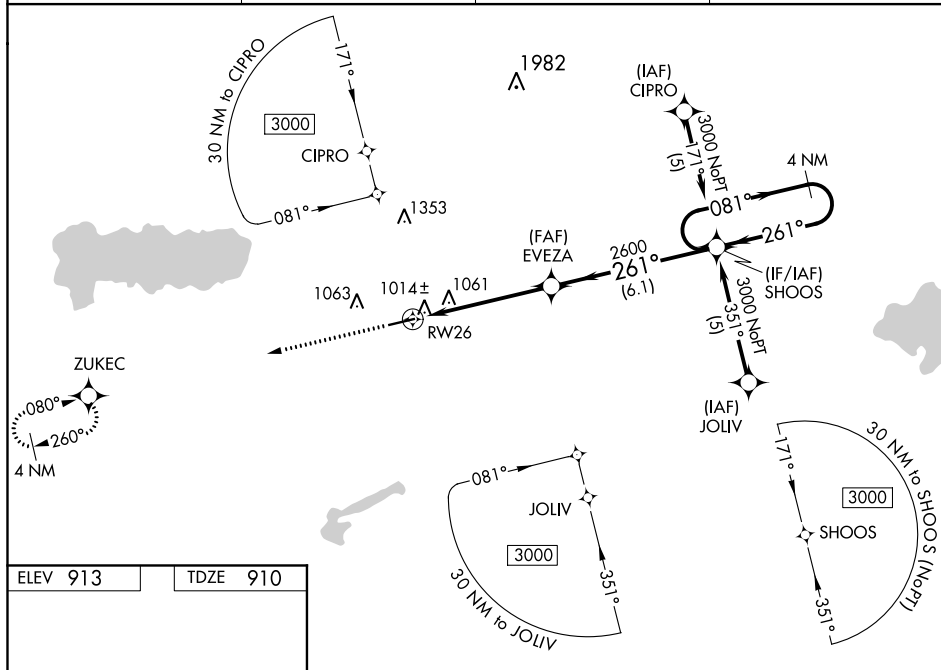


Diagram illustrating the RW26 approach procedure. Key elements include:

- Runway: 5500 x 100, heading 261° to RW26.
- Altitude: 3000 ft.
- Navigation: \*NAV only, \*1.5 NM to RW26.
- Vertical Entry: EVEZA (End of Vertical Entry Zone) at 2600 ft.
- Horizontal Entry: SHOOB (Start of Horizontal Entry Zone) at 081° heading.
- Holding Pattern: 4 NM Holding Pattern.
- GP 3.00° TCH 40.

RNAV (GPS) RWY 26