

APP CRS  
**081°**

Rwy Idg  
TDZE  
**913**

Apt Elev  
**913**

RNAV (GPS) RWY 8

NEIL ARMSTRONG (AXV)

RNP APCH.

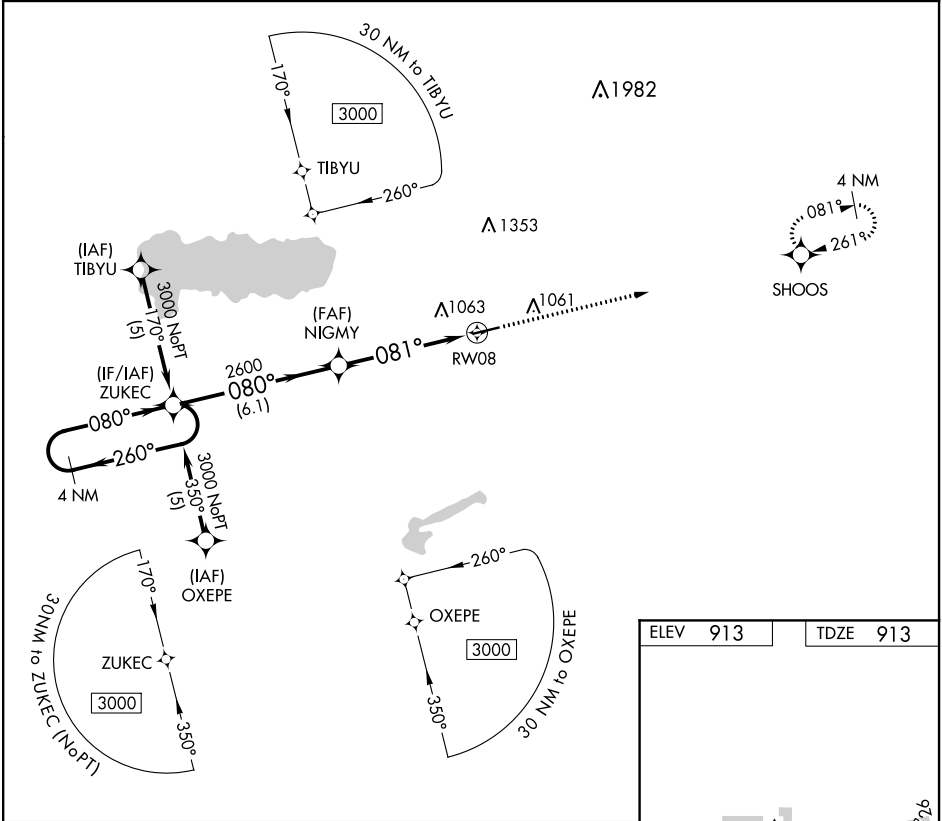
▼

NA

Rwy 8 helicopter visibility reduction below 1 SM NA. When local altimeter setting not received, use Lima altimeter setting and increase all MDA 60 feet, increase LNAV Cat C visibility ¼ mile.

MISSED APPROACH: Climb to 3000 direct SHOOS and hold.

AWOS-3 <b>128.325</b>	COLUMBUS APP CON <b>118.425 294.5</b>	UNICOM <b>122.8 (CTAF)</b>	<b>122.7 0</b>
--------------------------	--	-------------------------------	----------------



4 NM Holding Pattern

3000

260°

080°

ZUKEC

NIGMY

RW08

2600

081°

3.04°

TCH 40

6.1 NM

5.1 NM

3000

SHOOS

081° to RW08

5500 X 100

081° to RW08

MIRL Rwy 8-26 0

REIL Rwy 8 and 26 0

CATEGORY	A	B	C	D
LNAV MDA	1380-1	467 (500-1)	1380-1¼ 467 (500-1¼)	NA