

WAAS CH <b>53529</b> <b>W09A</b>	APP CRS <b>095°</b>	Rwy Idg <b>5005</b> TDZE <b>752</b> Apt Elev <b>752</b>
--	------------------------	---

RNAV (GPS) RWY 9

FOSTORIA METROPOLITAN (FZI)

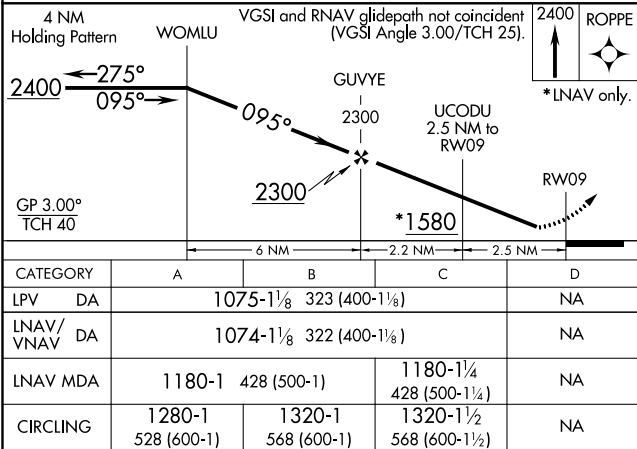
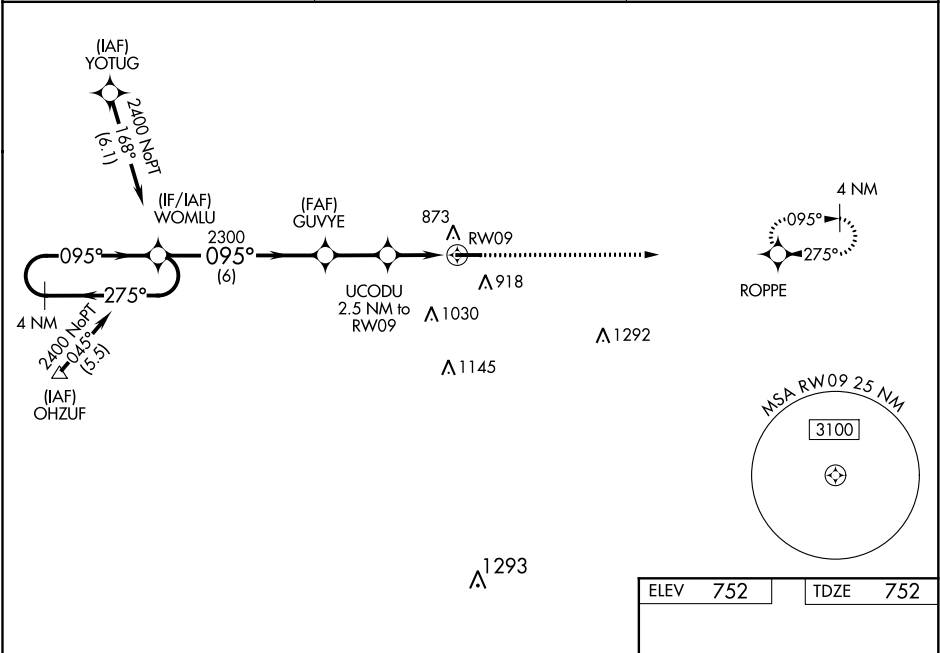
▼

▲

DME/DME RNP-0.3 NA. Visibility reduction by helicopters NA. Baro-VNAV NA when using Findlay altimeter setting. For uncompensated Baro-VNAV systems, LNAV/VNAV NA below -16°C (4°F) or above 54°C (130°F). When local altimeter setting not received, use Findlay altimeter setting and increase all DA 47 feet and all MDA 60 feet, increase LPV and LNAV/VNAV all Cats visibility to 1¼ mile, increase LNAV Cat C visibility to 1⅜, increase Circling Cat C visibility to 1¾. When VGSI inop, Straight-in/Circling Rwy 9 procedure NA at night.

MISSED APPROACH:  
Climb to 2400 direct ROPPE and hold.

AWOS-3 <b>124.625</b>	TOLEDO APP CON <b>126.1 307.0</b>	UNICOM <b>122.7</b> (CTAF) <b>0</b>
--------------------------	--------------------------------------	--



ELEV	752	TDZE	752
------	-----	------	-----

CATEGORY	A	B	C	D
LPV DA	1075-1⅞	323 (400-1⅞)		NA
LNAV/VNAV DA	1074-1⅞	322 (400-1⅞)		NA
LNAV MDA	1180-1	428 (500-1)	1180-1¼ 428 (500-1¼)	NA
CIRCLING	1280-1 528 (600-1)	1320-1 568 (600-1)	1320-1½ 568 (600-1½)	NA

REIL Rwy 9 and 27 **0**  
MIRL Rwy 9-27 **0**