

WAAS CH 69329 W23A	APP CRS 227°	Rwy Idg 5405 TDZE 716 Apt Elev 725
--	------------------------	---

RNAV (GPS) RWY 23

RNP APCH.

- T** For uncompensated Baro-VNAV systems, LNAV/VNAV NA below -16°C (3°F) or above 39°C (103°F). When local altimeter setting not received, use Rickenbacker Intl altimeter setting and increase all DA/MDA 60 feet, increase LPV all Cats, LNAV/VNAV all Cats and LNAV Cat C and D and Circling Cat C visibility $\frac{1}{4}$ mile. Baro-VNAV and VDP NA when using Rickenbacker Intl altimeter setting. Rwy 23 helicopter visibility reduction below $\frac{1}{4}$ SM NA.

MISSED APPROACH:
Climb to 1500 then
climbing right turn to
3000 direct JONEX
and hold.

AWOS-3 119,225	COLUMBUS APP CON 134.0 279.6	UNICOM 122.8 (CTAF)	123.0
--------------------------	--	-------------------------------	--

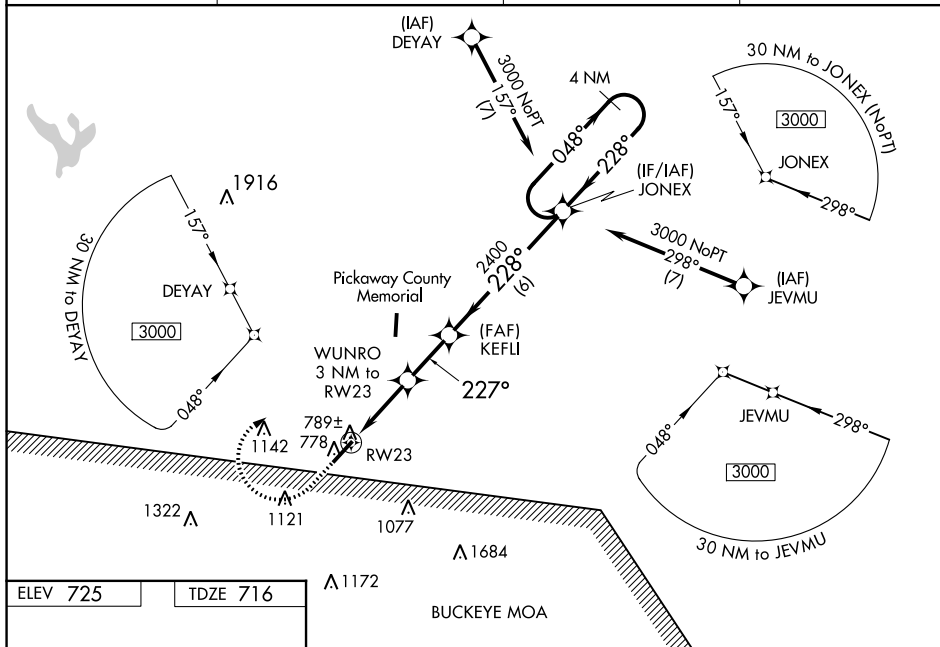


Diagram illustrating the RW23 holding pattern and associated data:

- Holding Pattern:** 4 NM Holding Pattern, 0.9 NM to RW23, 227° to RW23, 228° to 3000, 048° to 3000, 228° to 3000.
- Altitudes:** 1700, 2400, 3000.
- Navigation:** *LNAV only, *0.9 NM to RW23, WUNRO 3 NM to RW23, *1700, 2400, 3000.
- Diagram Labels:** RW23, 5405 X 100, 0.4% UP, 227° to RW23, 228°, 048°, 228°, 3000, 2400, 1700, 0.9, 2.1 NM, 2.2, 6 NM, GP 3.00°, TCH 45.

CATEGORY	A	B	C	D
LPV DA		966-3/4	250 (300-3/4)	
LNAV/VNAV DA		1088-1 1/4	372 (400-1 1/4)	
LNAV MDA		1040-1	324 (400-1)	
CIRCLING	1320-1 595 (600-1)	1380-1 655 (700-1)	1380-1 3/4 655 (700-1 3/4)	1400-2 1/4 675 (700-2 1/4)

REIL Rwy 5 and 23 **1**
MIRL Rwy 5-23 **1**