

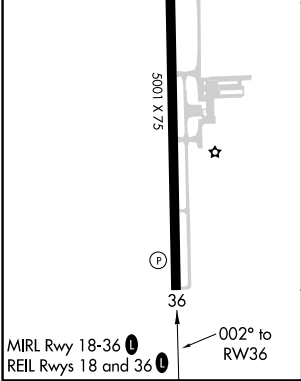
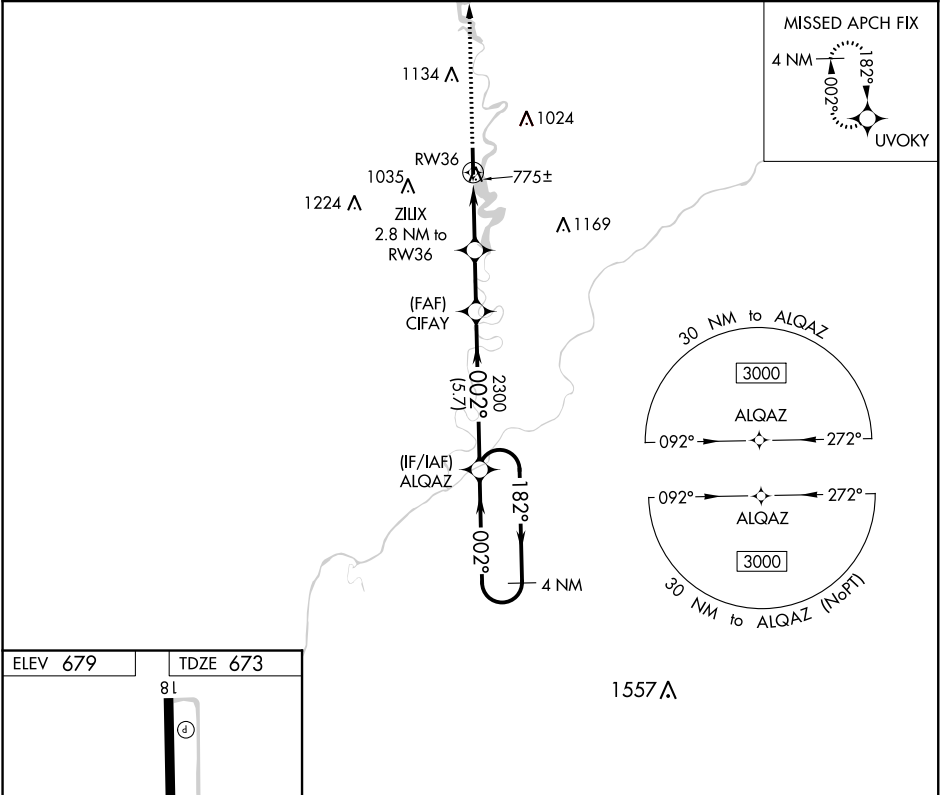
APP CRS <b>002°</b>	Rwy Idg	<b>5001</b>
	TDZE	<b>673</b>
	Apt Elev	<b>679</b>

RNAV (GPS) RWY 36

WHITE COUNTY (MCX)

<div><div><div>▼</div><div>▲</div></div><div>DME/DME RNP-0.3 NA. Straight-in Rwy 36 NA at night, Circling Rwy 36 NA at night. Rwy 36 helicopter visibility reduction below 1 SM NA.</div></div>	MISSED APPROACH: Climb to 3000 direct UVOKY and hold.
---	---

AWOS-3P <b>124.05</b>	GRISCOM APP CON ★ <b>123.85 291.675</b>	UNICOM <b>122.8</b> (CTAF) <b>0</b>
--------------------------	--	--



3000	UVOKY	VGSI and descent angles not coincident (VGSI Angle 4.00/TCH 25).		4 NM Holding Pattern
ZILUX 2.8 NM to RW36		CIFAY	ALQAZ	
RW36		3.00° TCH 40	182° 002° 3000	
2.8 NM		2.2 NM	5.7 NM	
CATEGORY	A	B	C	D
LNAV MDA	1040-1 367 (400-1)			
CIRCLING	1200-1 521 (600-1)	1340-1 661 (700-1)	1500-2½ 821 (900-2½)	1500-2¾ 821 (900-2¾)

EC-2, 03 DEC 2020 to 31 DEC 2020

EC-2, 03 DEC 2020 to 31 DEC 2020