

WAAS CH <b>70527</b> <b>W18A</b>	APP CRS <b>182°</b>	Rwy Idg TDZE <b>698</b> Apt Elev <b>698</b>
--	------------------------	---

RNAV (GPS) RWY 18

JASPER COUNTY (R.Z.L.)

RNP APCH.

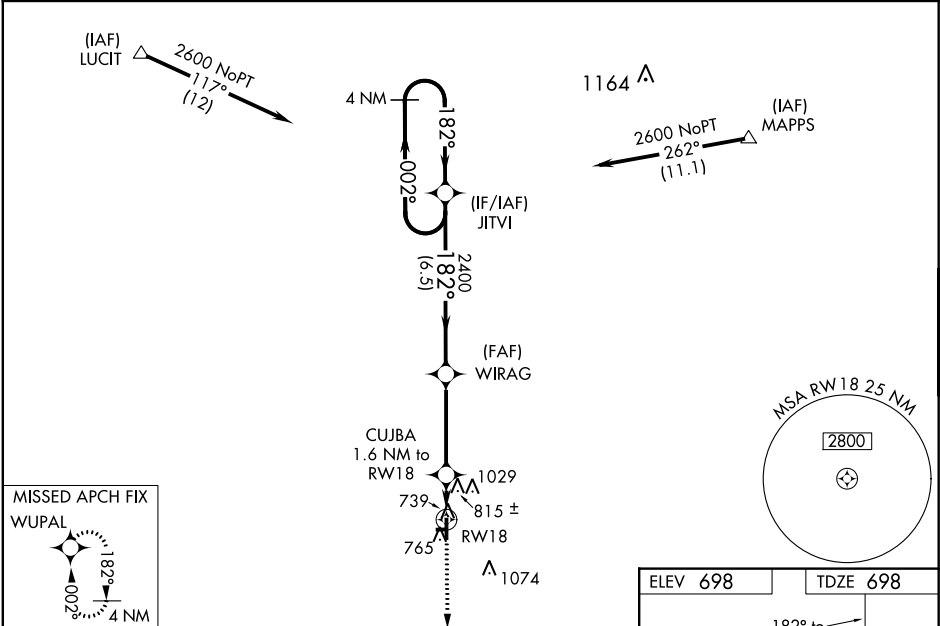
T

A

Baro-VNAV NA when using Knox altimeter setting. For uncompensated Baro-VNAV systems LNAV/VNAV NA below -22°C or above 54°C. When local altimeter setting not received, use Knox altimeter setting and increase all DA 78 feet and all MDA 80 feet. Increase LPV all Cats visibility ¼ mile, LNAV-VNAV all Cats and LNAV and Circling Cat C visibility ½ mile. Rwy 18 helicopter visibility reduction below 1 SM NA. Circling NA to Rwys 9 and 27.

MISSED APPROACH:  
Climb to 2600 direct WUPAL and hold.

AWOS-3P <b>119.175</b>	CHICAGO CENTER <b>132.5 284.7</b>	UNICOM <b>122.8 (CTAF) 0</b>
---------------------------	--------------------------------------	---------------------------------



4 NM Holding Pattern				
VGSI and RNAV glidepath not coincident (VGSI Angle 3.00/TCH 27).				
GP 3.00° TCH 40				
*LNAV only.				
6.5 NM 3.6 NM 1.6				
CATEGORY	A	B	C	D
LPV DA	948-1 250 (300-1)			NA
LNAV/VNAV DA	1096-1 3/8 398 (400-1 3/8)			NA
LNAV MDA	1080-1 382 (400-1)		1080-1 1/8 382 (400-1 1/8)	NA
CIRCLING	1120-1 422 (500-1)	1340-1 642 (700-1)	1340-1 3/4 642 (700-1 3/4)	NA

