

WAAS CH 65734 W27A	APP CRS 272°	Rwy Idg TDZE 861 Apt Elev 861
--	------------------------	---

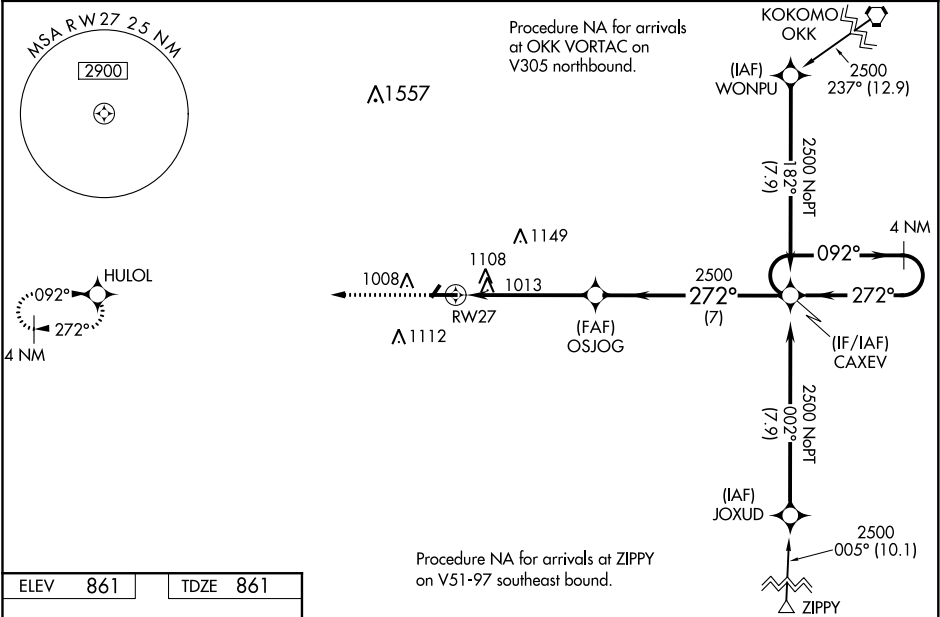
RNAV (GPS) RWY 27
FRANKFORT MUNI (FKR)

NA

Baro-VNAV NA when using Indianapolis Executive altimeter setting. For uncompensated Baro-VNAV systems, LNAV/VNAV NA below -16°C (4°F) or above 54°C (130°F). DME/DME RNP-0.3 NA. VDP NA with Indianapolis Executive altimeter setting. When local altimeter setting not received, use Indianapolis Executive altimeter setting and increase all DA 56 feet and all MDA 60 feet; increase LPV all Cats visibility 1/8 mile, LNAV Cats C/D visibility 1/8 mile, and Circling Cats C/D visibility 1/4 mile.

MISSED APPROACH:
Climb to 2500 direct HULOL and hold.

AWOS-3 124.325	GRISOM APP CON ★ 123.85 291.675	UNICOM 123.0 (CTAF) 0
--------------------------	---	---------------------------------



ELEV **861** TDZE **861**

MIRL Rwy 9-27 and 4-22 0
REIL Rwy 9 and 27 0

The inset chart shows the airport layout with runways 9-27 and 4-22, taxiways, and surrounding terrain. It includes a scale bar for 5000 X 75 and a heading indicator for 272° to RWY 27.

2500	HULOL	VGSI and RNAV glidepath not coincident (VGSI Angle 3.00/TCH 25).		
*LNAV only		OSJOG	CAXEV	4 NM Holding Pattern
RW27		2500	272°	092° 2500
1.7		3.4 NM	7 NM	GS 3.00° TCH 40
CATEGORY	A	B	C	D
LPV DA	1111-7/8 250 (300-7/8)			
LNAV/VNAV DA	1476-2 1/2 615 (700-2 1/2)			
LNAV MDA	1420-1	559 (600-1)	1420-1 1/8	559 (600-1 1/8)
CIRCLING	1460-1	599 (600-1)	1520-1 3/4	1520-2
			659 (700-1 3/4)	659 (700-2)

EC-2, 03 DEC 2020 to 31 DEC 2020

EC-2, 03 DEC 2020 to 31 DEC 2020