

WAAS CH 97701 W10A	APP CRS 100°	Rwy Idg TDZE Apt Elev	5004 857 868
--	------------------------	-----------------------------	---

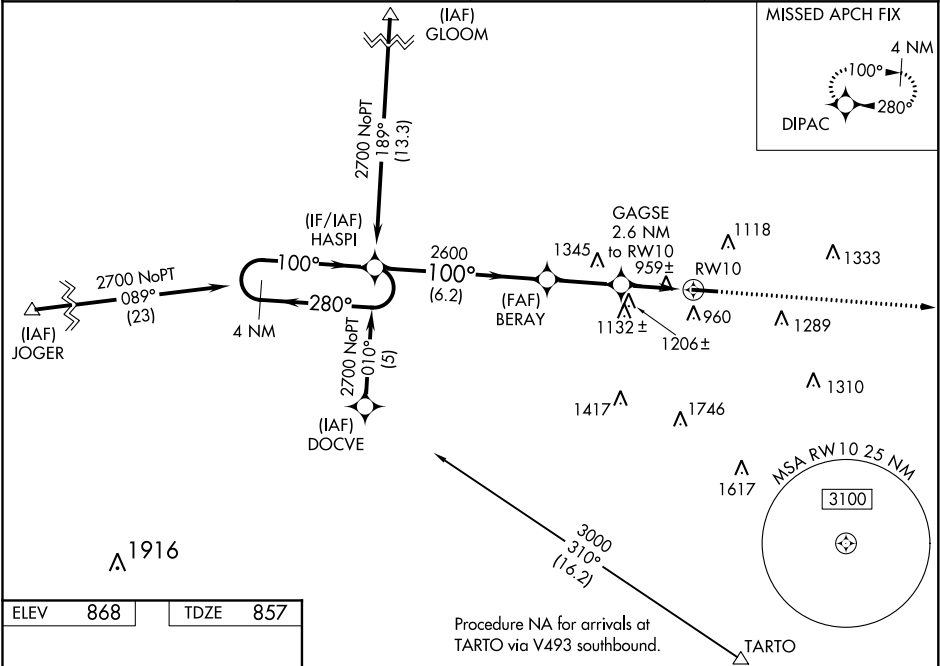
RNAV (GPS) RWY 10
FAIRFIELD COUNTY (LHQ)

RNP APCH.

Baro-VNAV and VDP NA when using Rickenbacker Intl altimeter setting. For uncompensated Baro-VNAV systems, LNAV/VNAV NA below -16°C or above 54°C. When local altimeter setting not received, use Rickenbacker Intl altimeter setting and increase all DAs 48 feet, and all MDAs 60 feet, and increase LPV, LNAV/VNAV all Cots and Circling Cat C visibility ¼ mile. Rwy 10 helicopter visibility reduction below ¾ SM NA.

MISSED APPROACH:
Climb to 2800 direct
DIPAC and hold.

ASOS 118.375	COLUMBUS APP CON 134.0 279.6	CLNC DEL 121.65	UNICOM 122.725 (CTAF) 0
------------------------	--	---------------------------	-----------------------------------



ELEV	868	TDZE	857
------	-----	------	-----

100° to RW10

5004 X 75

REIL Rws 10 and 28 0

MIRL Rwy 10-28 0

4 NM Holding Pattern				2800 DIPAC	
HASPI				* LNAV only.	
2700 ← 280° → 100° → 100°				GP 3.00° TCH 40	
BERAY				* 1.8 NM to RW10	
GAGSE 2.6 NM to RW10				RW10	
2600				1720*	
6.2 NM				2.7 NM	
0.9 NM				1.8 NM	
CATEGORY	A	B	C	D	
LPV DA	1170-1	313 (400-1)		NA	
LNAV/VNAV DA	1291-1 ½	434 (500-1 ½)		NA	
LNAV MDA	1460-1	603 (600-1)	1460-1 ¾ 603 (600-1 ¾)	NA	
CIRCLING	1520-1 652 (700-1)	1540-1 672 (700-1)	1560-2 692 (700-2)	NA	

EC-2, 03 DEC 2020 to 31 DEC 2020

EC-2, 03 DEC 2020 to 31 DEC 2020